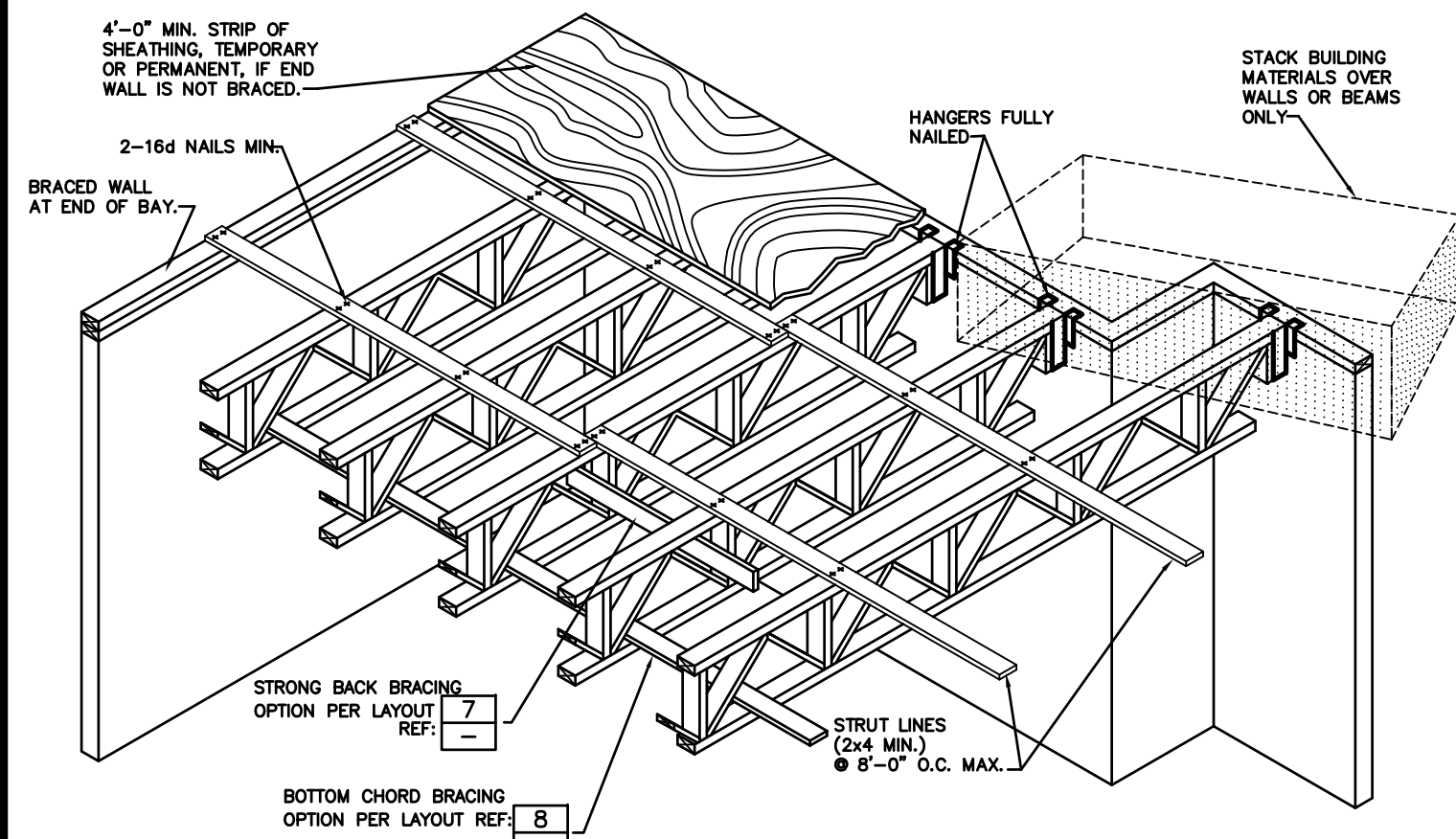
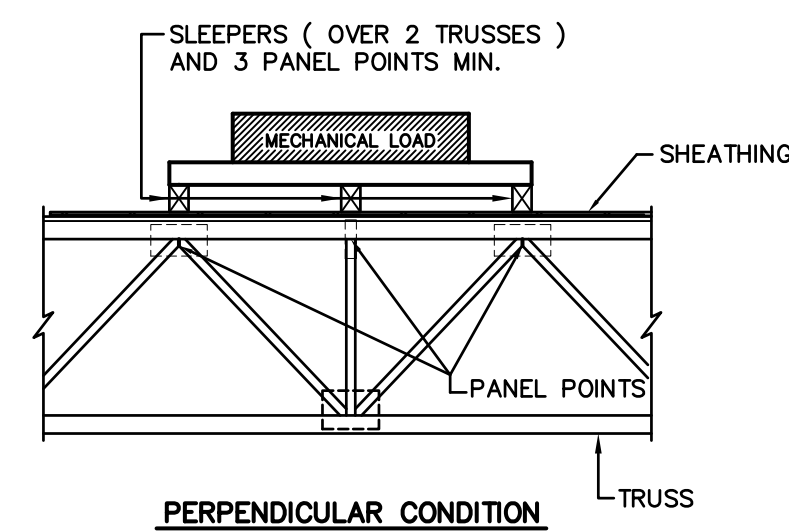
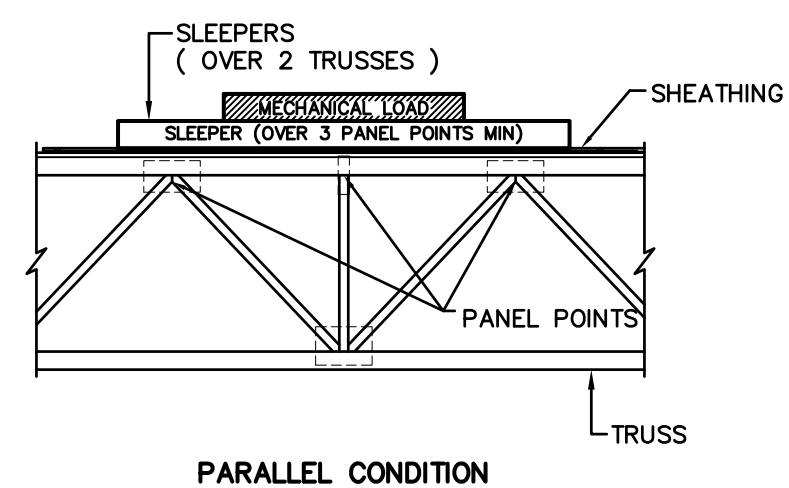


ATTENTION

NO ONE SHOULD BE ALLOWED ON ANY TRUSS UNTIL ALL HANGERS & CROSS BRIDGING, IF REQ'D, AND TEMPORARY BRACING ARE IN PLACE AND NAILED SECURELY. SERIOUS ACCIDENTS MAY OCCUR UNLESS CARE IS TAKEN TO PROPERLY BRACE DURING CONSTRUCTION. THIS DETAIL SHOULD BE USED AS A GUIDELINE FOR BRACING.



1 ERECTION BRACING

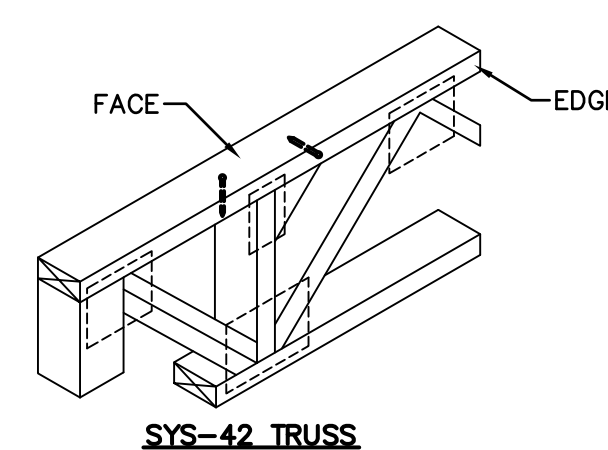


- NOTES**
- COORDINATE MECHANICAL LOCATIONS WITH LAYOUT AND TRUSS CALCULATIONS
 - SLEEPERS MUST BE LOCATED AT PANEL POINTS

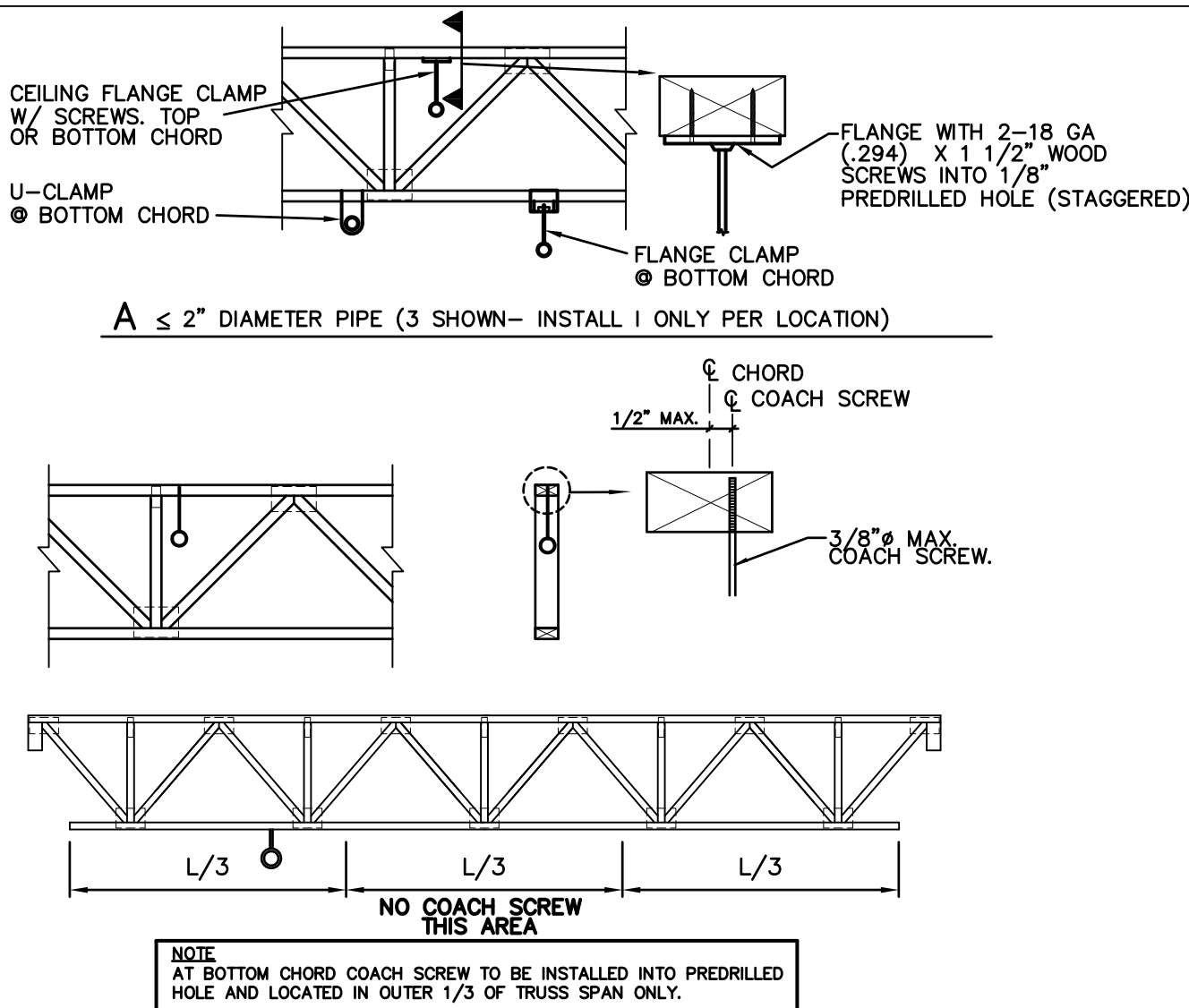
2 MECHANICAL LOADS ON TRUSSES

TRUSS NAILING CHART (MINIMUM ON CENTER SPACING)

NAIL TYPE	NAIL SIZE	FACE	EDGE
8d	BOX COMMON 0.113"x2 1/2"	2"	2"
10d	BOX COMMON 0.128"x3"	2"	2"
12d	BOX COMMON 0.148"x3 1/4"	3"	2"
16d	BOX COMMON 0.148"x3 1/4"	3"	4"
	BOX COMMON 0.135"x3 1/2"	3"	3"
	SINKER COMMON 0.148"x3 1/4"	3"	4"
	COMMON 0.162"x3 1/2"	4"	6"



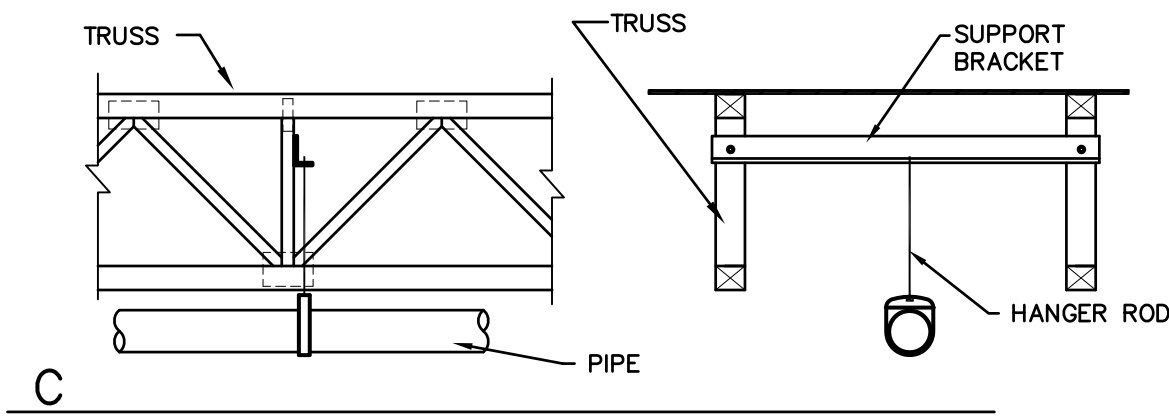
3 NAILING CHART



$A \leq 2"$ DIAMETER PIPE (3 SHOWN- INSTALL 1 ONLY PER LOCATION)

$B \leq 2"$ DIAMETER PIPE

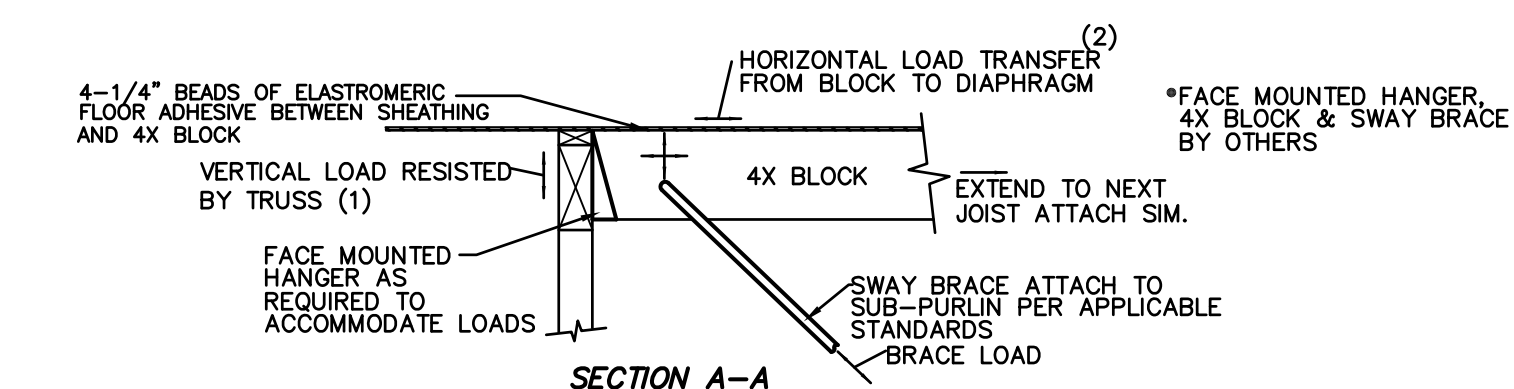
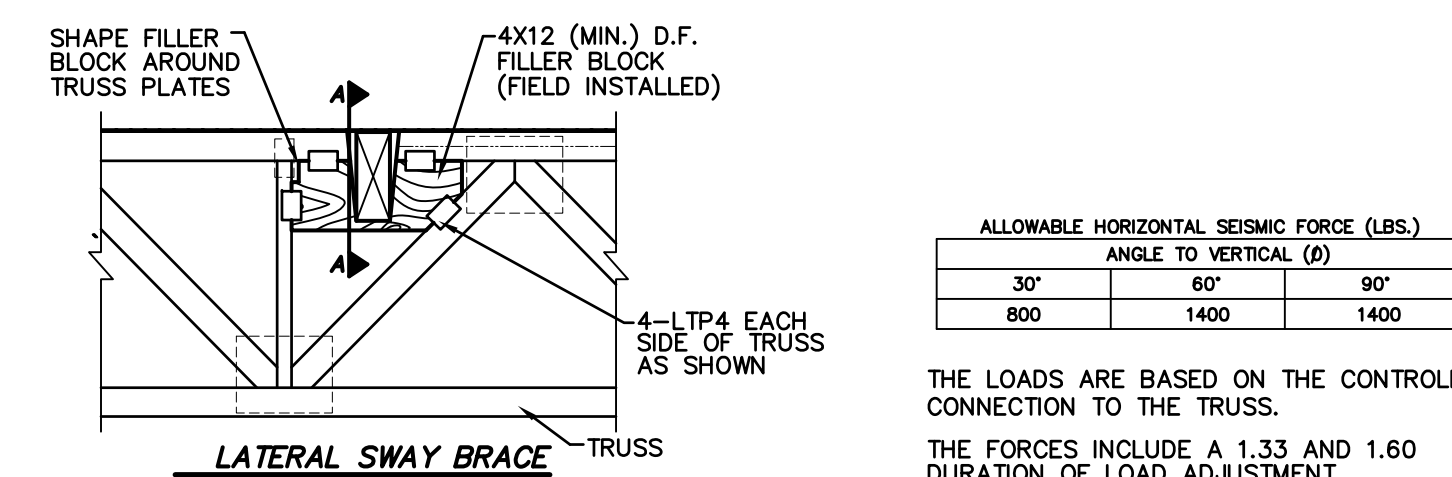
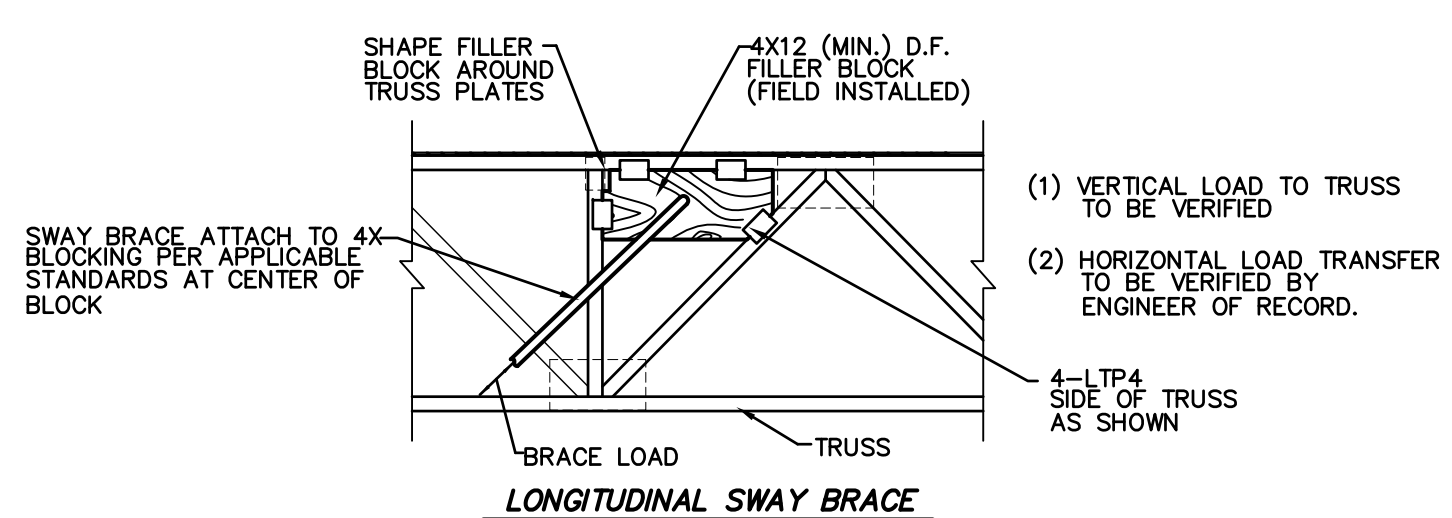
NOTE: PRE-DRILL COACH SCREW.



NOTES:

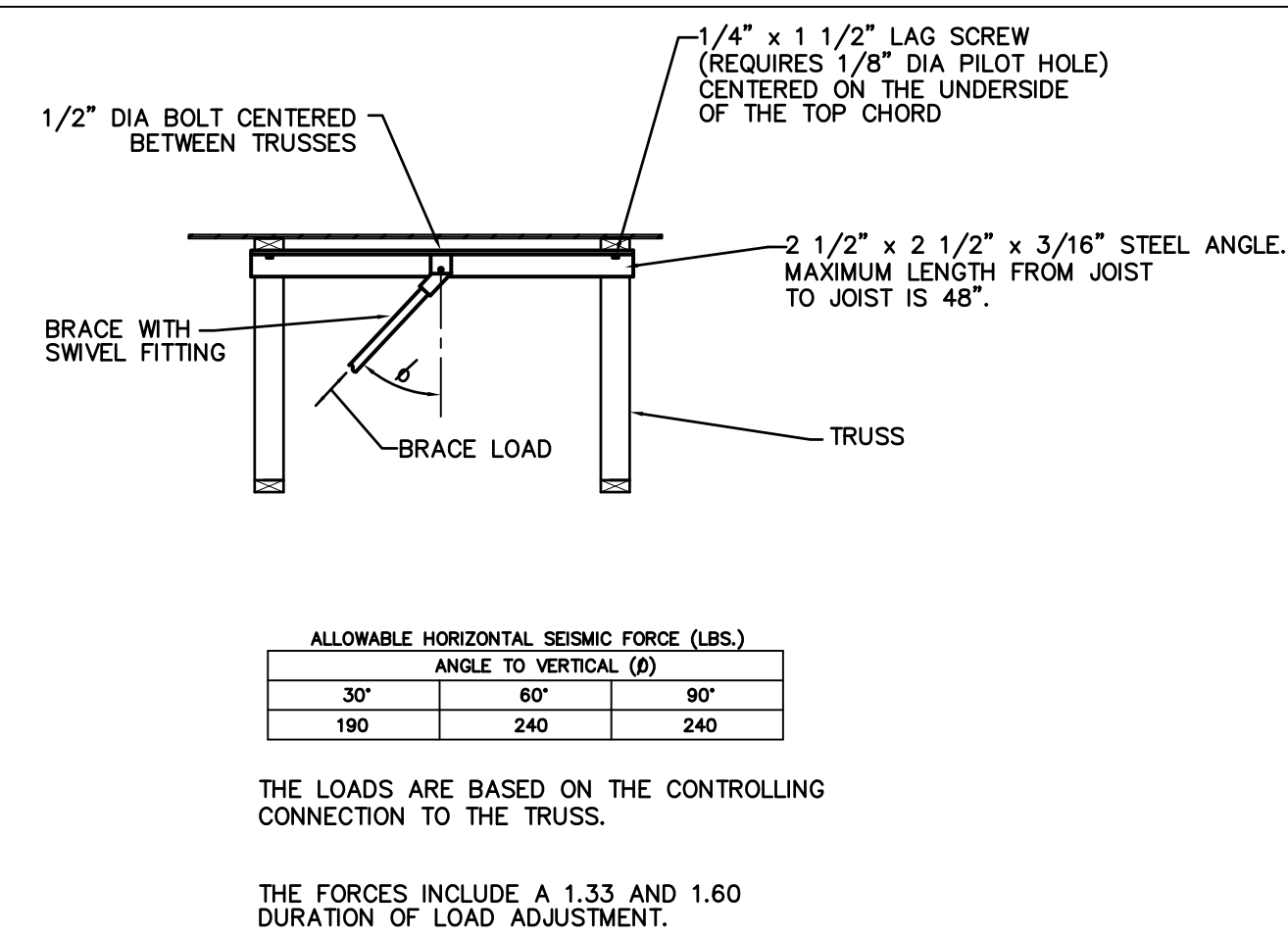
- WOOD SCREWS WITH A MAXIMUM DIAMETER OF 1/8" MAY BE USED ANYWHERE ON THE TOP CHORD OF THE TRUSS WITH A PRE-DRILLED PILOT HOLE, UNLESS NOTED OTHERWISE ON PLANS.
- DO NOT DRILL HOLES, DRIVE HEAVY SCREWS, OR USE LAG BOLTS IN THE BOTTOM CHORD OF TRUSS, EXCEPT AS NOTED.
- COORDINATE ATTACHMENT OF SPRINKLER PIPE GREATER THAN 3" DIAMETER AND LARGER WITH TRUSS LAYOUT AND CALCULATIONS. IT IS ASSUMED THAT THE ENGINEER OF RECORD HAS ALLOWED FOR BRANCH SPRINKLER LINES 3" DIAMETER AND LESS IN THE DESIGN DEAD LOAD.
- ALL SPRINKLER AND SPRINKLER ATTACHMENTS INCLUDING WOOD SUPPORTS ARE TO BE FURNISHED AND INSTALLED BY OTHERS.

4 FIRE SPRINKLER ATTACHMENT DETAIL



5A FIRE SPRINKLER SWAY BRACE DETAIL

5B FIRE SPRINKLER SWAY BRACE DETAIL

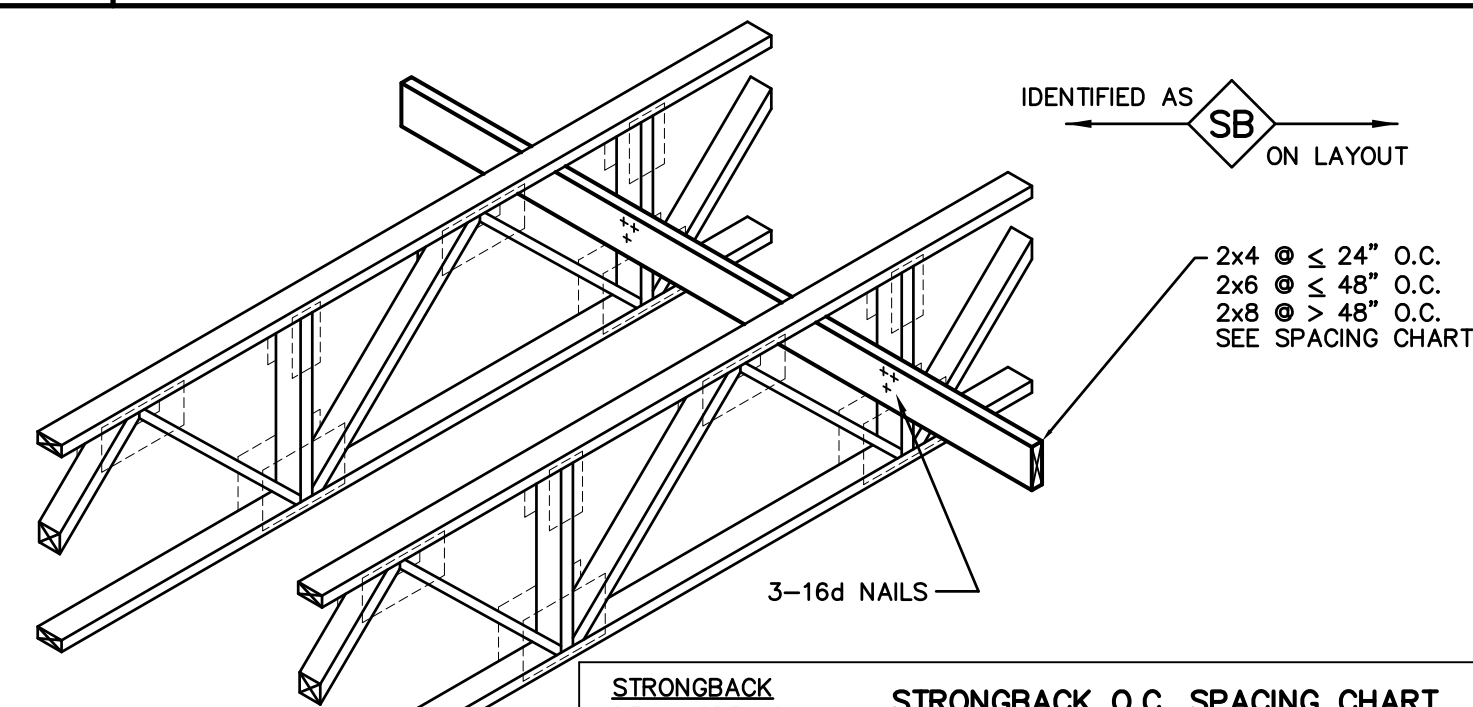


ANGLE TO VERTICAL (D)	30°	60°	90°
ALLOWABLE HORIZONTAL SEISMIC FORCE (LBS.)	190	240	240

THE LOADS ARE BASED ON THE CONTROLLING CONNECTION TO THE TRUSS.

THE FORCES INCLUDE A 1.33 AND 1.60 DURATION OF LOAD ADJUSTMENT.

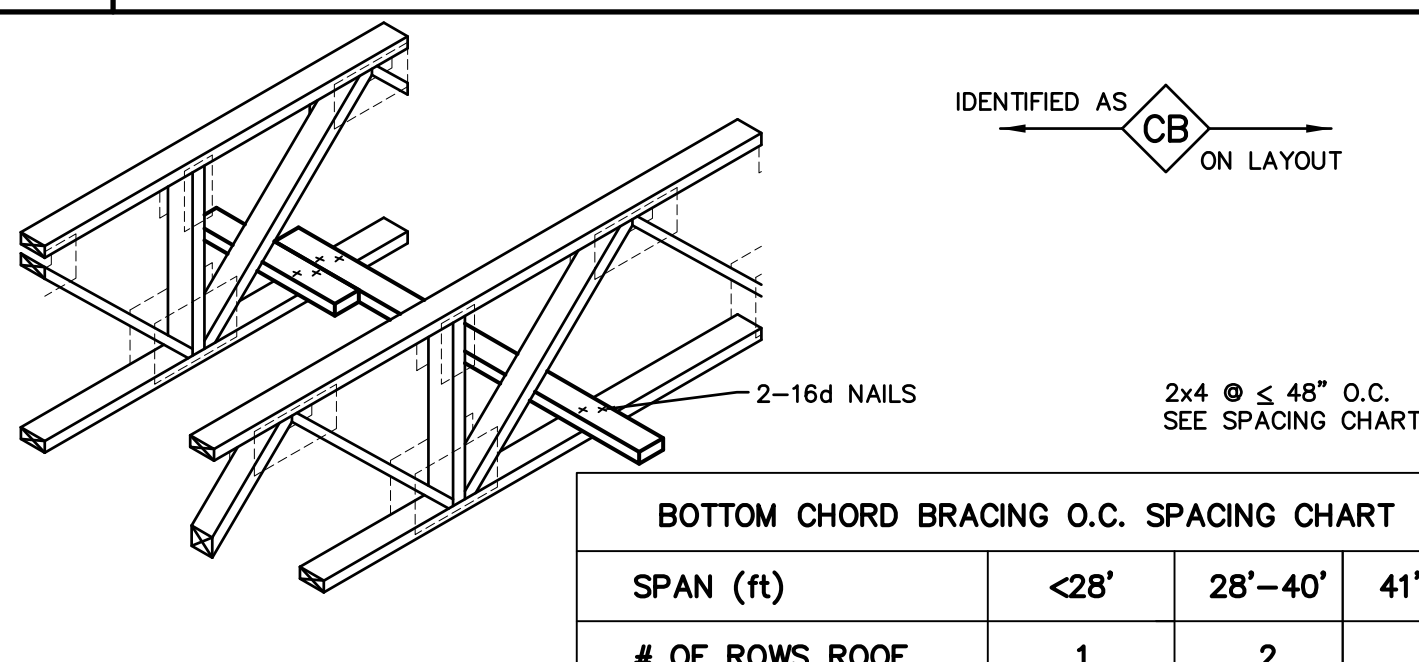
6 TRUSS AT NON-BEARING WALL



STRONGBACK DF or SPF #2	STRONGBACK O.C. SPACING CHART			
	SPAN (ft)	<28'	28'-40'	41'-56'
# OF ROWS ROOF	1	2	3	
# OF ROWS FLOOR	1	2	N/A	

MAXIMUM ON CENTER SPACING OF BRIDGING IS 14'-0" THIS BRACING MATERIAL IS INTEGRAL TO THE PERFORMANCE OF THE TRUSS AND IS TO BE CONSIDERED PERMANENT.

7 STRONGBACK DETAIL



SPAN (ft)	BOTTOM CHORD BRACING O.C. SPACING CHART		
	<28'	28'-40'	41'-56'
# OF ROWS ROOF	1	2	3

MAXIMUM ON CENTER SPACING OF BRIDGING IS 14'-0" THIS BRACING MATERIAL IS INTEGRAL TO THE PERFORMANCE OF THE TRUSS AND IS TO BE CONSIDERED PERMANENT.

8 BOTTOM CHORD BRACING DETAIL

SYS-42 OPEN WEB TRUSS

JOB SITE HANDLING OF OPEN WEB TRUSSES

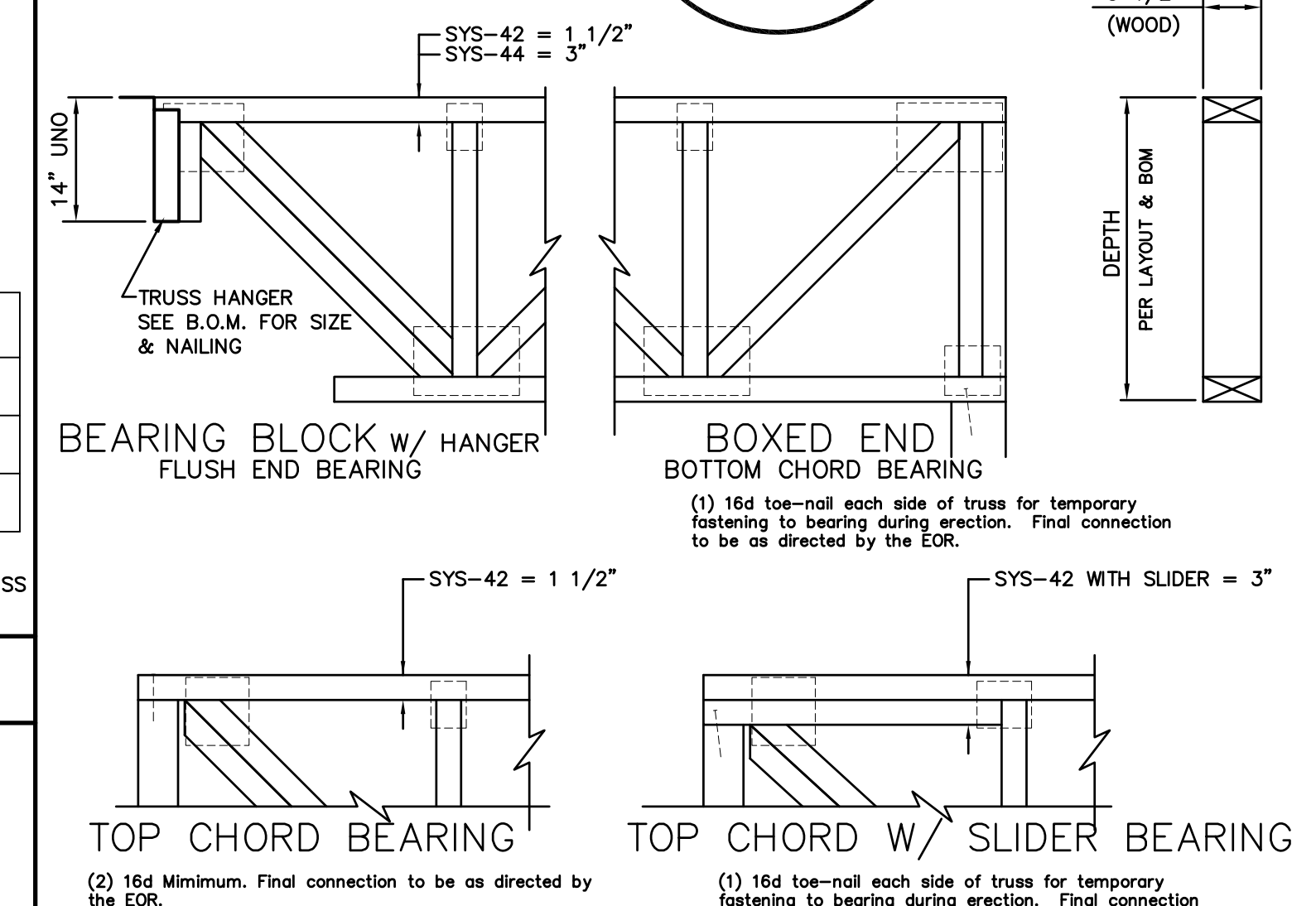
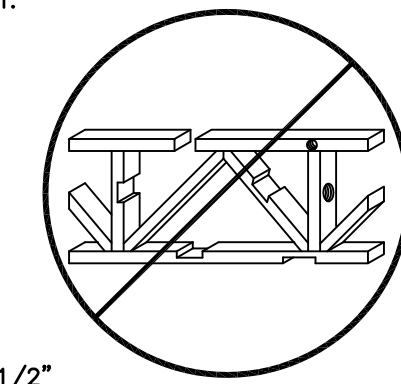
IT IS THE BUILDING CONTRACTOR'S RESPONSIBILITY TO UNLOAD THE TRUSSES FROM THE TRUCK AND FOR ALL HANDLING THEREAFTER. THE TRUSS GUARANTEE ONLY APPLIES AS LONG AS THE PRODUCT IS NOT DAMAGED OR ALTERED IN ANY WAY. IS INSTALLED IN A WORKMANLIKE MANNER AND ACCORDING TO THE INSTALLATION INFORMATION NOTED HEREIN. THE TRUSSES WILL BE DELIVERED TO THE JOBSITE IN BUNDLES Banded TOGETHER FOR HANDLING EASE. TO AVOID DAMAGE, TRUSSES SHOULD BE LEFT IN THESE BUNDLES UNTIL READY FOR INSTALLATION IN THE STRUCTURE. A CARELESS CRANE OR FORKLIFT OPERATOR CAN DAMAGE THE TRUSSES. NEVER HANDLE THE TRUSSES FLAT - KEEP IN AN UPRIGHT POSITION.

STORAGE OF THE OPEN WEB TRUSSES

DURING STORAGE AT THE JOBSITE, KEEP THE TRUSSES IN AN UPRIGHT POSITION. THE BUNDLES SHOULD BE SUPPORTED ON LEVEL STICKERS TO KEEP THE TRUSSES OUT OF THE MUD AND DIRT. STACKING OF BUNDLES IS PERMITTED IF AN ADEQUATE NUMBER OF STICKERS ARE PROVIDED TO PREVENT DAMAGE AND NORMAL SAFETY PRECAUTIONS ARE FOLLOWED. LONG EXPOSURE TO WATER AND SUN WILL CAUSE SOME DETERIORATION AND CHECKING OF WOOD. THE TRUSSES SHOULD RECEIVE THE SAME PROTECTION FROM WEATHER AS OTHER WOOD PRODUCTS.

TYPICAL PROJECT NOTES:

- FOR NOTES, DETAILS, AND DIMENSIONS NOT ON THESE PRODUCT PLACEMENT PLAN DRAWINGS, REFER TO PROJECT PLANS.
- SEE BILLS OF MATERIAL FOR ITEMS FURNISHED.
- ALL CLOUDED NOTES, DIMENSIONS, ETC. REQUIRE VERIFICATION AND MUST BE MARKED EITHER "OK" OR THE CORRECT INFORMATION PROVIDED BY CUSTOMER, PRIOR TO RETURN TO BEING RETURNED FOR FABRICATION.
- PLEASE BE AWARE THAT ANY CLOUDED ITEMS NOT ACKNOWLEDGED WILL REQUIRE CONTACT WITH RESPONSIBLE PARTIES AND MAY CAUSE DELAY IN THE PROCESSING OF YOUR ORDER.
- PLEASE VERIFY THAT ALL INFORMATION PROVIDED HEREWITH REFLECTS THE LATEST AVAILABLE PROJECT INFORMATION AND THAT ALL G2T TRUSS LENGTHS CORRESPOND WITH ACTUAL FIELD DIMENSIONS PRIOR TO BEING RETURNED FOR FABRICATION.
- ALL BRACING SHOWN IS INTEGRAL TO THE SYS-42 OPEN WEB TRUSS SYSTEM AND IS NOT TEMPORARY OR ERECTION BRACING. THE OPEN WEB TRUSS WILL NOT SAFELY SUPPORT LOADS UNTIL FULLY BRACED, FULLY ATTACHED TO BEARING WALLS OR BEAMS, AND SHEATHING, IS PROPERLY INSTALLED (SEE LAYOUTS AND DETAILS).
- POINT LOADS THAT EXCEED 100 LBS. AS INDICATED ON THE PLACEMENT PLAN HEREIN.
- INSTALLATION OF THE OPEN WEB TRUSSES MUST FOLLOW ANY ADDITIONAL REQUIREMENTS INDICATED ON THE PLACEMENT PLAN AND IN THE CALCULATIONS.
- ALL THE OPEN WEB TRUSSES ARE DESIGNED FOR UNIFORM LOADS AND CONCENTRATED LOADS NOTED ON THESE DRAWINGS AND CALCULATIONS. TEMPORARY CONSTRUCTION LOADS WHICH CAUSE STRESSES BEYOND DESIGN CRITERIA ARE NOT PERMITTED.
- ALL 2X, 4X, 6X ETC. FRAMING TO BE SUPPLIED BY OTHERS, UNO. (FMBO).
- METAL STRAPS AND/OR TIES USED FOR SEISMIC PURPOSES THAT ARE NAILED TO THE TOP OF THE TOP CHORD ARE TO USE 10d NAILING AT NO LESS THAN 3" ON IN A ROW UNLESS ACCEPTABLE STRAPS FOR THE TOP CHORDS ARE LTTI, LSTI, MSTI AND PAF OR OTHER COMPARABLE ITEMS UNO.
- THE OPEN WEB TRUSS ARE NOT DESIGNED TO SUPPORT ANY FIRE SPRINKLER AND/OR MECHANICAL LOADS OTHER THAN WHAT IS SHOWN WITHIN THESE DRAWINGS, AND OR WHAT HAS BEEN PROVIDED IN THE DESIGN DEAD LOAD(S).
- THE PLACEMENT OF THE MECHANICAL UNITS AND SPRINKLER MAINS ARE TO BE AS NOTED ON THE PLACEMENT PLAN. THE SUPPORTING TRUSSES HAVE BEEN SPECIFICALLY DESIGNED TO ACCOMMODATE THESE ITEMS. ALL COMPONENTS TRANSFERRING LOADS TO THE TRUSSES SHALL BE DESIGNED AND INSTALLED IN ACCORDANCE WITH THE DETAILS CONTAINED WITHIN THESE DRAWINGS. IF THE ACTUAL LOCATIONS DO NOT COINCIDE WITH THESE DRAWINGS CONTACT THE MANUFACTURER.
- SYS-42 TRUSS DESIGNS ARE IN ACCORDANCE WITH THE CURRENT ADOPTED EDITION OF THE IBC, CBC, AND NATIONAL DESIGN SPECIFICATION, AND CONFORM TO CURRENT ICC-ES REPORT.



9 SYS-42 TRUSS NOTES AND PROFILES

LEGEND / ABBREVIATIONS

- SEE PROJECT PLANS FOR OTHER ABBREVIATIONS AND SYMBOLS USED.
- DETAIL (ON SHOP DRAWINGS)
 - PROJECT PLAN DETAIL (PER PLANS)
 - START TRUSS LAYOUT ○ o/c SPACING
 - STRONGBACK LOCATION
 - DIRECTION OF ROOF SLOPE
- FMBO = FRAMING MATERIAL BY OTHERS
 NIC = NOT IN CONTRACT
 UNO = UNLESS NOTED OTHERWISE
 LBS = POUNDS
 PSF = POUNDS PER SQUARE FOOT
 PLF = POUNDS PER LINEAL FOOT
 DBL = DOUBLE MEMBER (TPL = TRIPLE MEMBER)

REVISIONS

BANQUET HALL & RESTAURANT REMODEL
 651 W. WHITTIER BLVD.
 LA HABRA, CA 90631

ENGINEER
 PEGGY DUDA
 909-373-1150

ARCHITECT
 PEGGY VOLBERDA
 909-373-1150

CUSTOMER
 NICHOLS LUMBER
 626-960-4802

G2 NATIONAL
 Evolution in Wood-Framed Structure.
 2165 GREEN VISTA DRIVE # 212 SPARKS, NEVADA 89431

PN-14457
 SHEET
 1 OF 3

NOTE: SPRINKLER LINES GREATER THAN 3" DIAMETER HAVE NOT BEEN CONSIDERED IN THE TRUSS DESIGNS

PROJECT PLANS USED:	
SHEETS	DATE
ARCHITECTURAL DRAWINGS	12/17/18
1.1 THRU 6	
STRUCTURAL DRAWINGS	12/05/18
S1.0 THRU S11	
MECHANICAL DRAWINGS	08/23/18
M-2 THRU M-4	

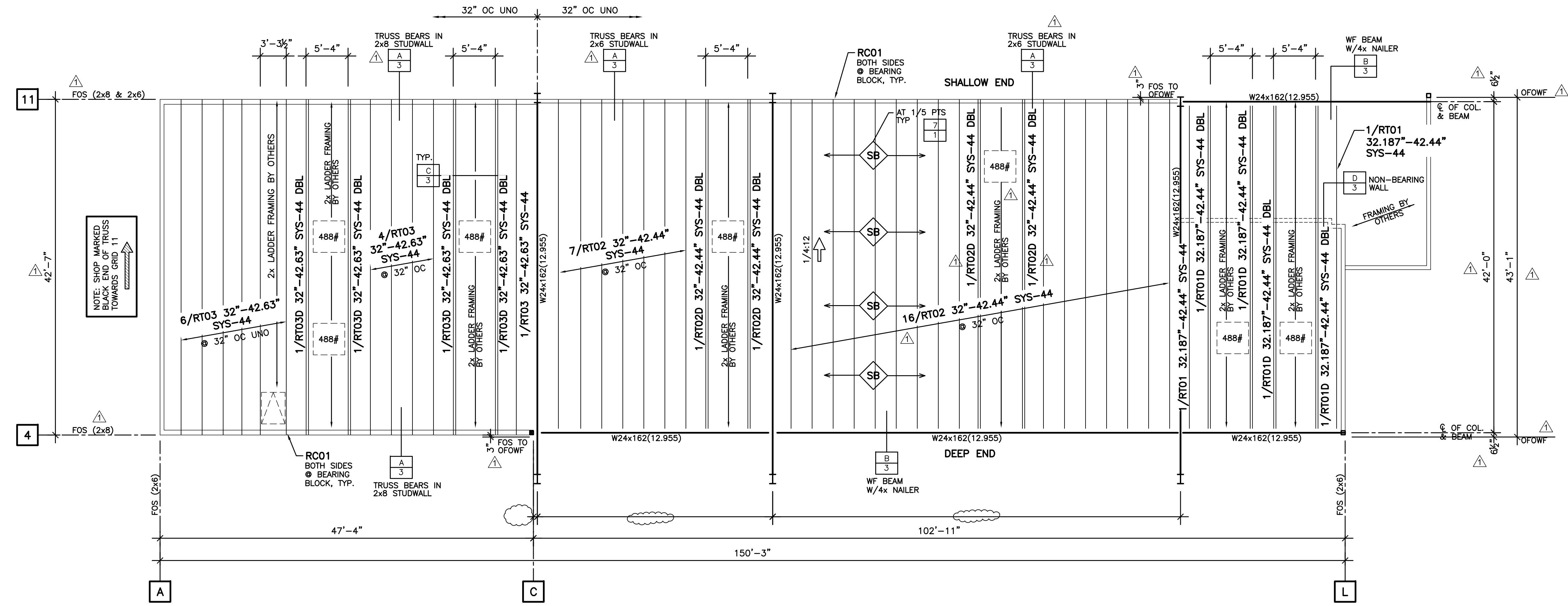
DESIGN LOADS	
LIVE LOAD	20 PSF
ROOF	
PART LOAD	- PSF
DEAD LOAD	15 PSF
TOTAL LOAD	35 PSF

DESIGN DEFLECTION
 $\Delta_{LL} \leq L/240$ $\Delta_{TL} \leq L/180$

LOAD DURATION FACTOR = 1.25
 DESIGN CODE CBC 2016
 DEAD LOAD BREAKDOWN: 11 PSF TC, 4 PSF BC

110 MPH WIND, EXP. C
 GROSS WIND UPLIFT (ULTIMATE):
 ZONE 1: 25 PSF, 15 PSF (ASD)
 ZONE 2: 30 PSF, 18 PSF (ASD)
 ZONE 3: 30 PSF, 18 PSF (ASD)
 a = 6'-0"

- ROOF LIVE LOAD REDUCIBLE PER CODE
 - ADDITIONAL 1000# MISC POINT LOAD OCCURRING AT ANY ONE TOP CHORD PANEL POINT ALONG THE SPAN CONCURRENT WITH UNIFORM DEAD AND LIVE LOAD PLUS MECH. NOTED
 - 5600 LBS (ASD) TENSION / COMPRESSION AT TOP CHORD
 - 1600 LBS (LRFD) WIND AXIAL



ROOF PRODUCT PLACEMENT PLAN

(REF: SB.0)
 SCALE: 1/8" = 1'-0"

SYS TRUSS LIST						
MARK	QTY	CLR SPAN	MFR LENGTH	DEPTH/SERIES	HANGER (BLACK END)	HANGER (OTHER END)
RT01D	4	41'-11"	40'-10 5/8"	42.44'-32.187" SYS-44 DBL	HBPH7.2514	HBPH7.2514
RT01	2	41'-11"	40'-10 5/8"	42.44'-32.187" SYS-44	BPH3514	BPH3514
RT02D	4	41'-3 1/2"	41'-8 5/16"	42.44'-32" SYS-44 DBL	-	HBPH7.2514
RT02	23	41'-3 1/2"	41'-8 5/16"	42.44'-32" SYS-44	-	BPH3514
RT03D	4	41'-4"	42'-6"	42.63'-32" SYS-44 DBL	-	-
RT03	11	41'-4"	42'-6"	42.63'-32" SYS-44	-	-

SIMPSON CONNECTORS					
QTY	MARK	DESCRIPTION	NAILING		REMARKS
			HEADER	JOIST	
27	RH01	HB3.56/14	16-16d	10-10d	SINGLE
12	RH02	HB7.25/14 H=14", W=7.25"	16-16d	10-10d	DOUBLE

MISC. MATERIAL LIST		
ITEM	QTY	REMARKS
2x6 B/C BRACING	627 LF	STD G2T B/C BRACING (SEE DETAIL 7/1)

SIMPSON CONNECTORS			
QTY	MARK	DESCRIPTION	REMARKS
114	RC01	HGA10 CLIP	HGA10KT

REVISIONS	
1	4-25-19 Per review and field dimensions
2	5-21-19 Revised hangers

BANQUET HALL & RESTAURANT REMODEL
 651 W. WHITTIER BLVD.
 LA HABRA, CA 90631

ENGINEER
 FREDERICK A. BROWN
 909-572-1150

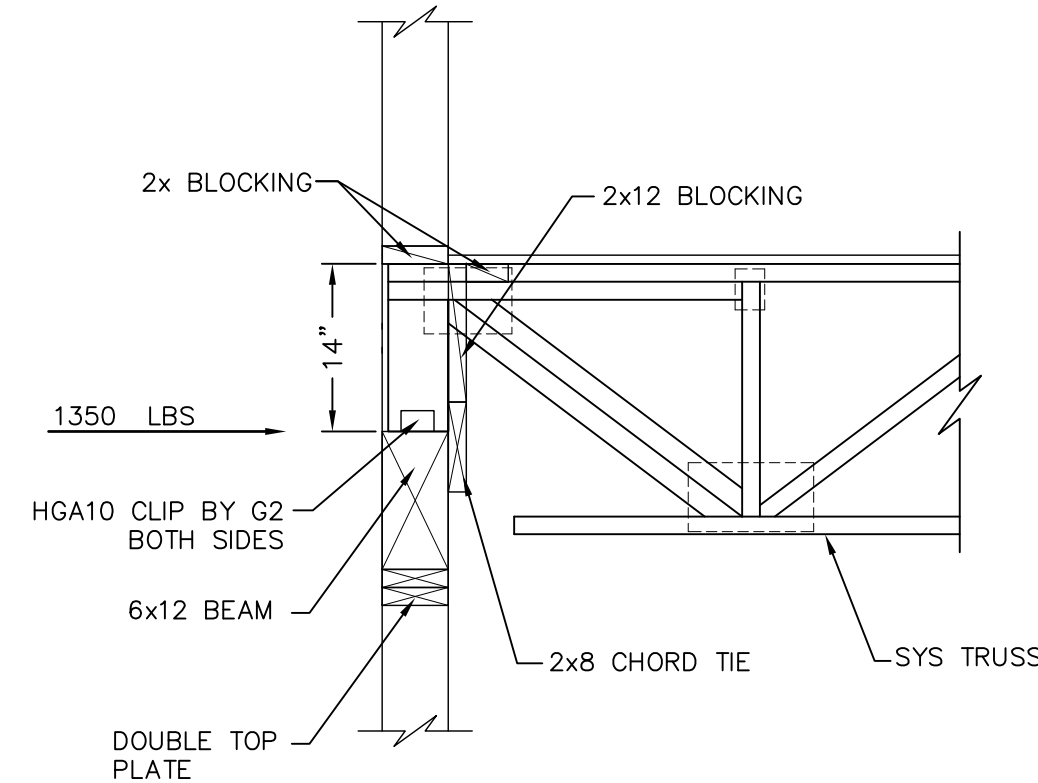
ARCHITECT
 PETE VOLEBETA
 909-572-1150

CUSTOMER
 NICHOLS LUMBER
 626-968-8822

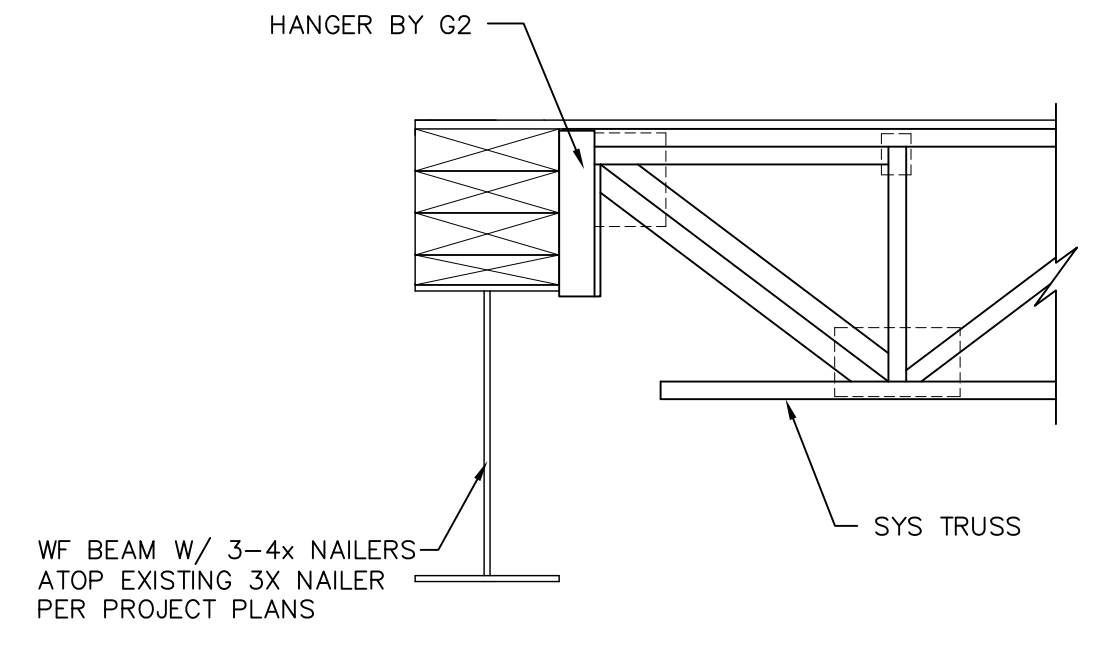
G2 NATIONAL
 Evolution in Wood-Framed Structure.
 2185 GREEN VALLEY DRIVE # 212, SPARKS, NEVADA 89431

04/12/2019
 PN-14457
 SHEET
 2 OF 3

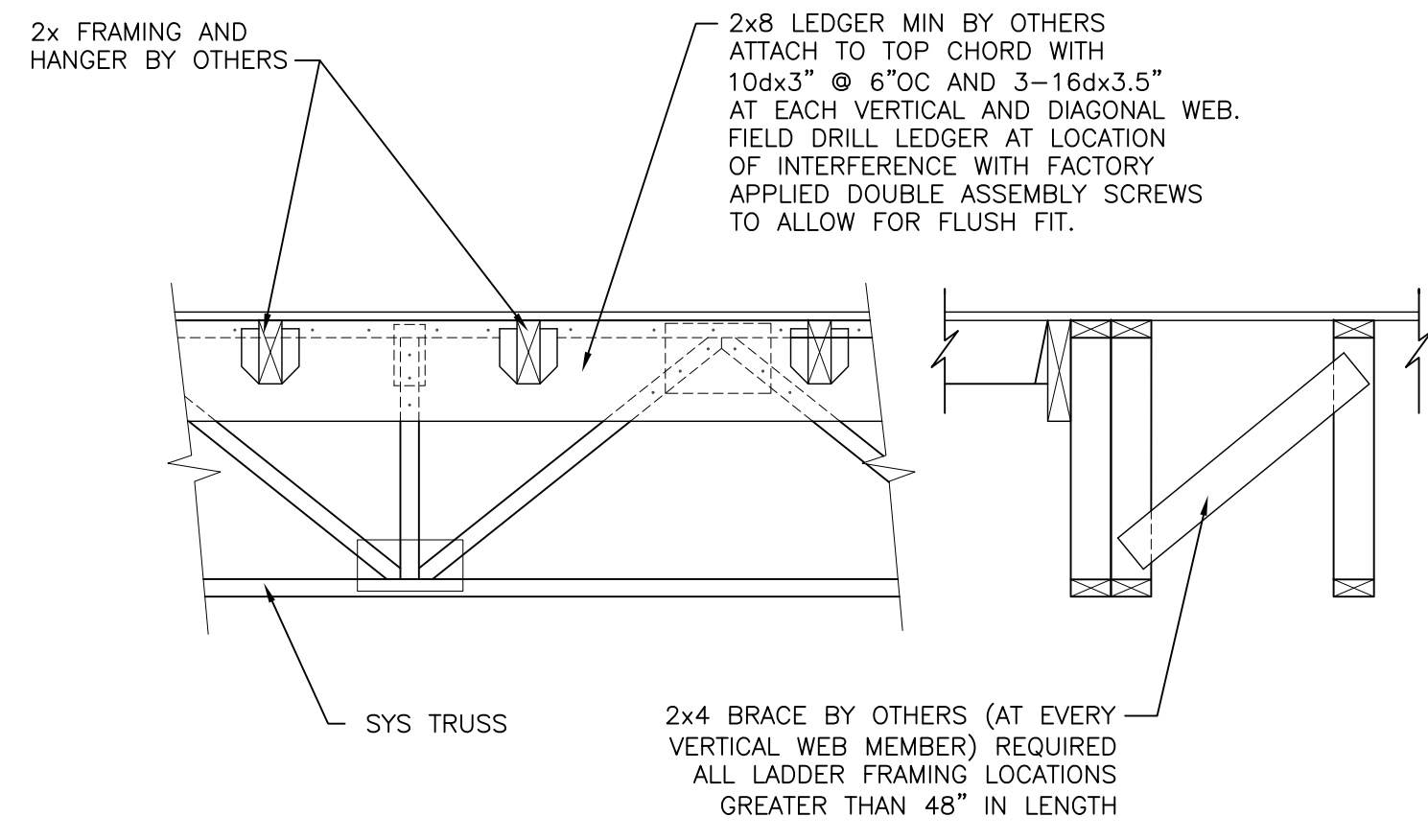
REVISED FOR CONSTRUCTION



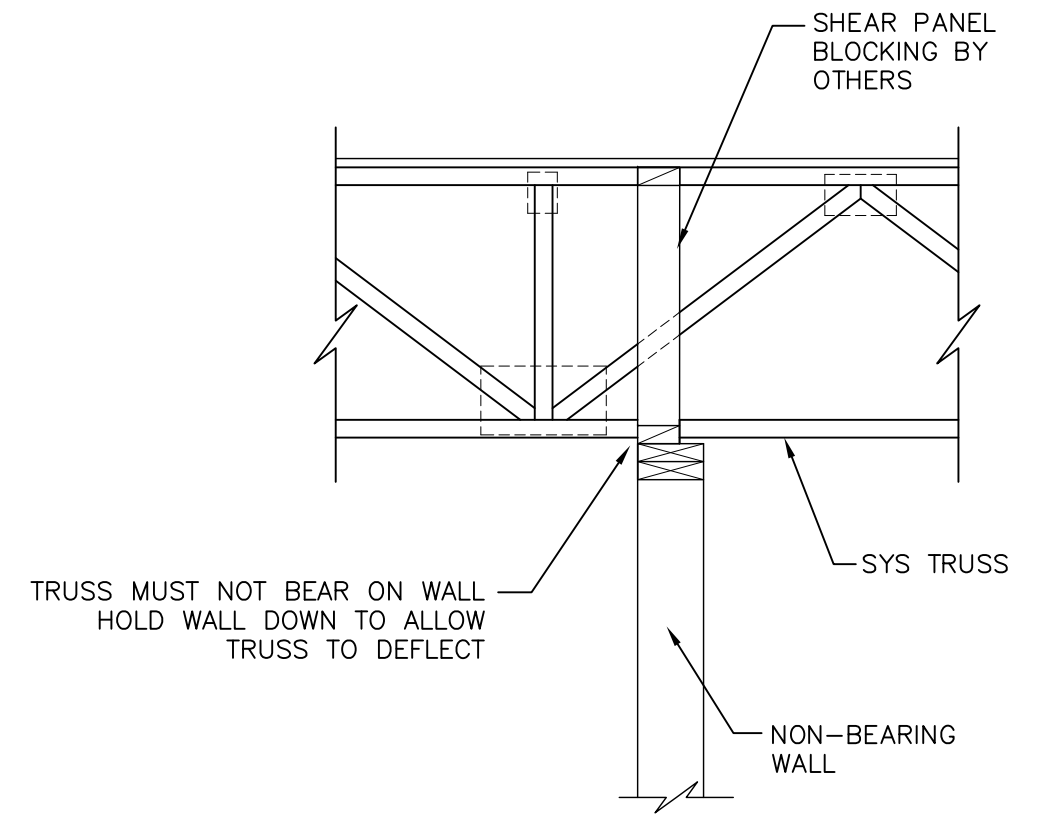
REF: 5/S9.0 A



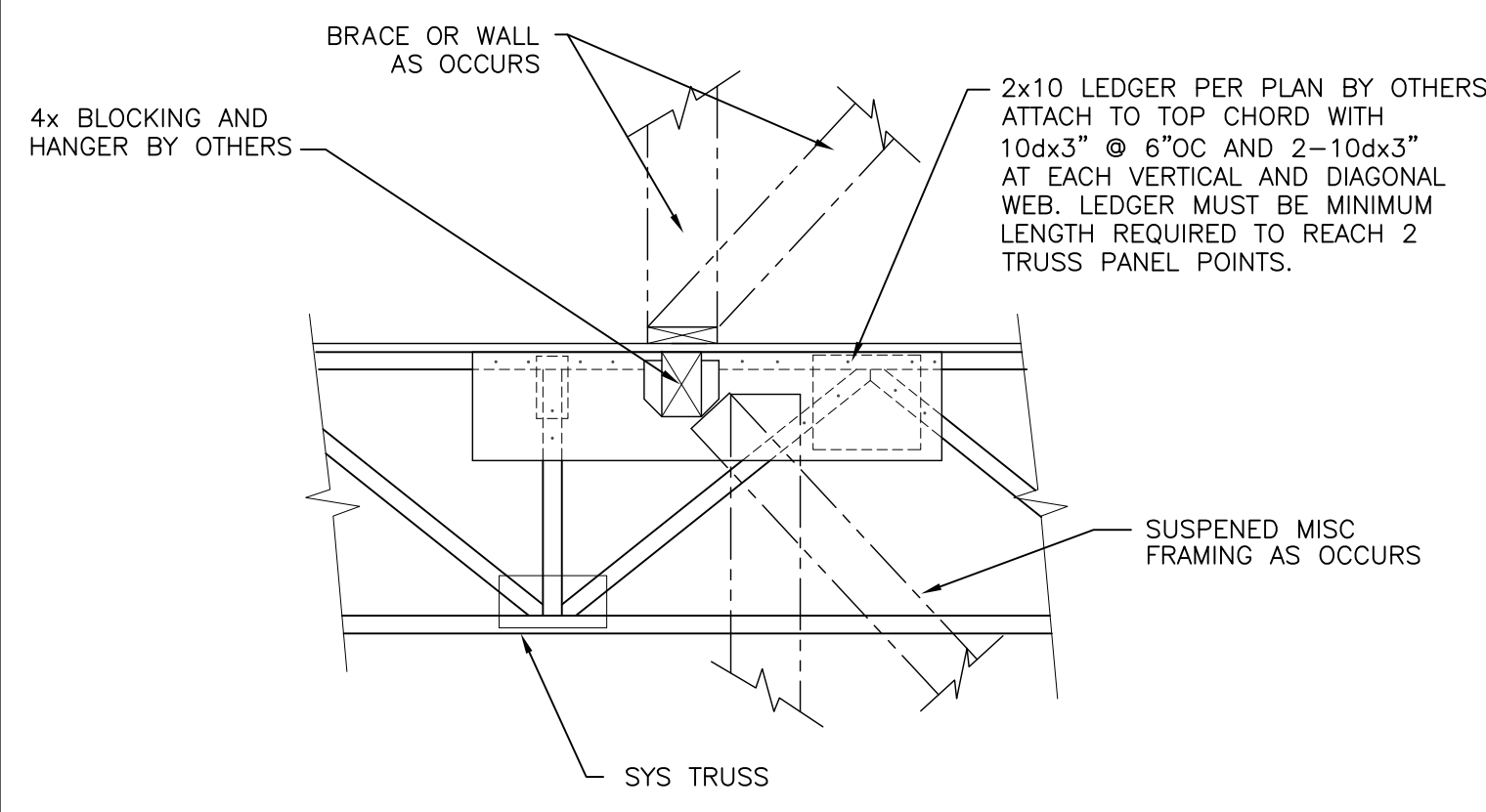
REF: 3/S10.0 B



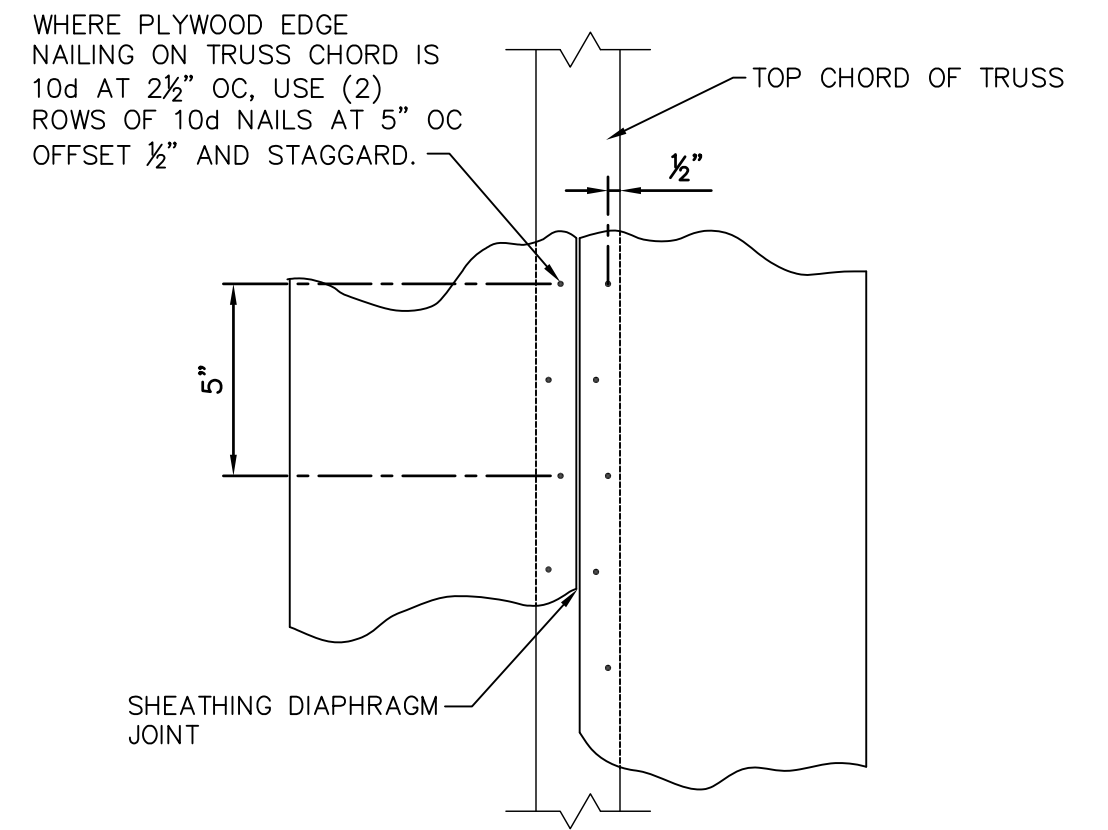
C



REF: 2/S9.0 D



REF: 5/S9.0 E



PLYWOOD NAILING DIAGRAM
(@ 2 1/2" OC) F

REVISIONS
4-25-19
5-2-19 Per detail from EOR.

BANQUET HALL & RESTAURANT REMODEL
 651 W. WHITTIER BLVD.
 LA HABRA, CA 90631

ENGINEER DAVID 906-572-1150
ARCHITECT PETE VON BEDIA 906-572-1150
CUSTOMER NICHOLS LUMBER 626-960-4802

