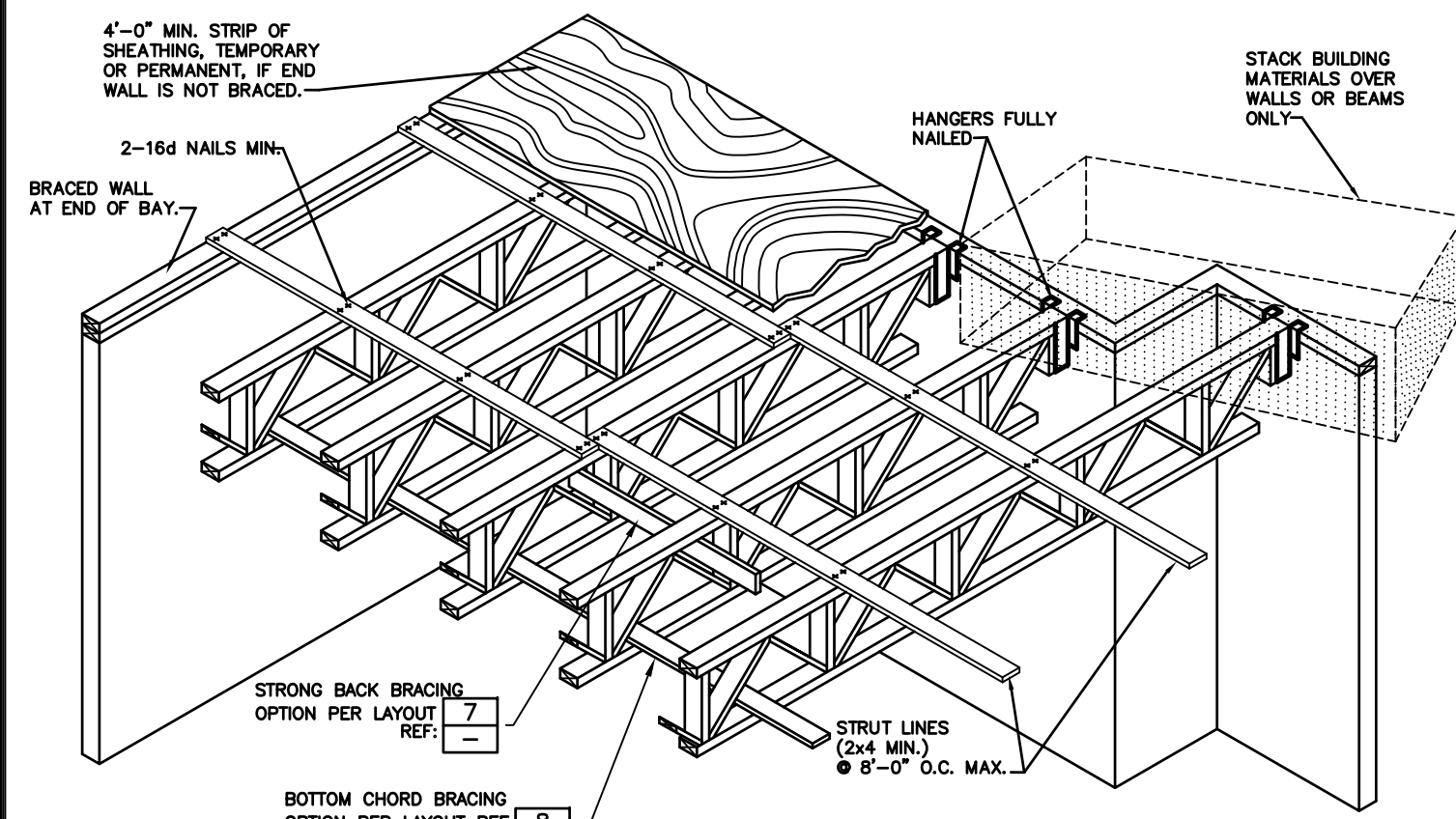
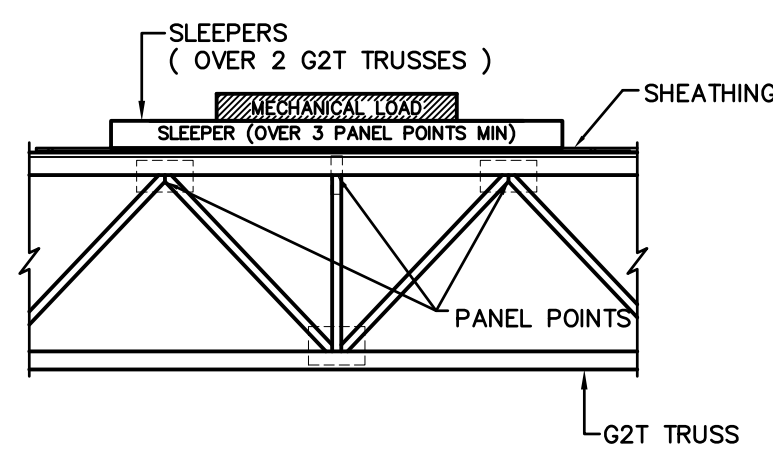


ATTENTION

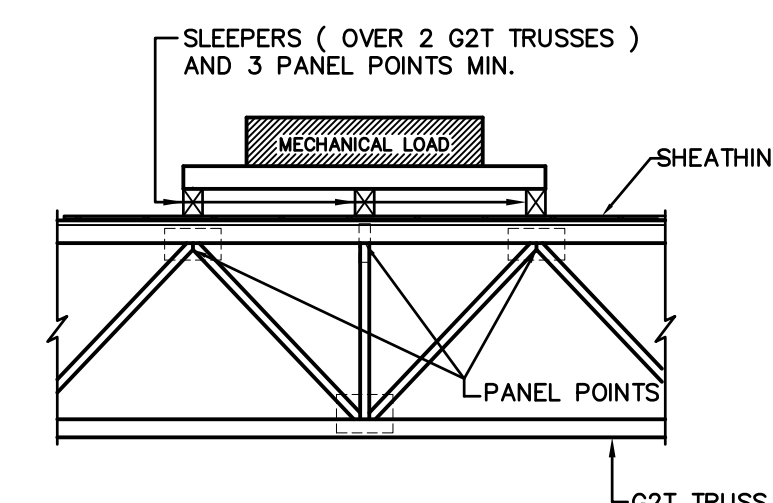
NO ONE SHOULD BE ALLOWED ON ANY G2T JOIST UNTIL ALL HANGERS & CROSS BRIDGING, IF REQ'D, AND TEMPORARY BRACING ARE IN PLACE AND NAILED SECURELY. SERIOUS ACCIDENTS MAY OCCUR UNLESS CARE IS TAKEN TO PROPERLY BRACE DURING CONSTRUCTION. THIS DETAIL SHOULD BE USED AS A GUIDELINE FOR BRACING.



1 ERECTION BRACING



PARALLEL CONDITION



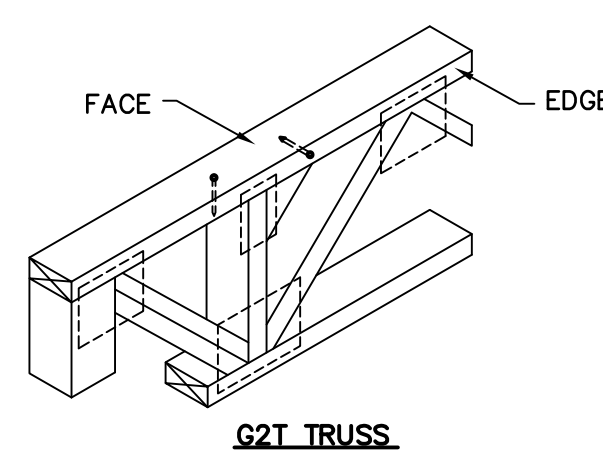
PERPENDICULAR CONDITION

- NOTES**
- COORDINATE MECHANICAL LOCATIONS WITH LAYOUT AND G2T CALCULATIONS
 - SLEEPERS MUST BE LOCATED AT PANEL POINTS

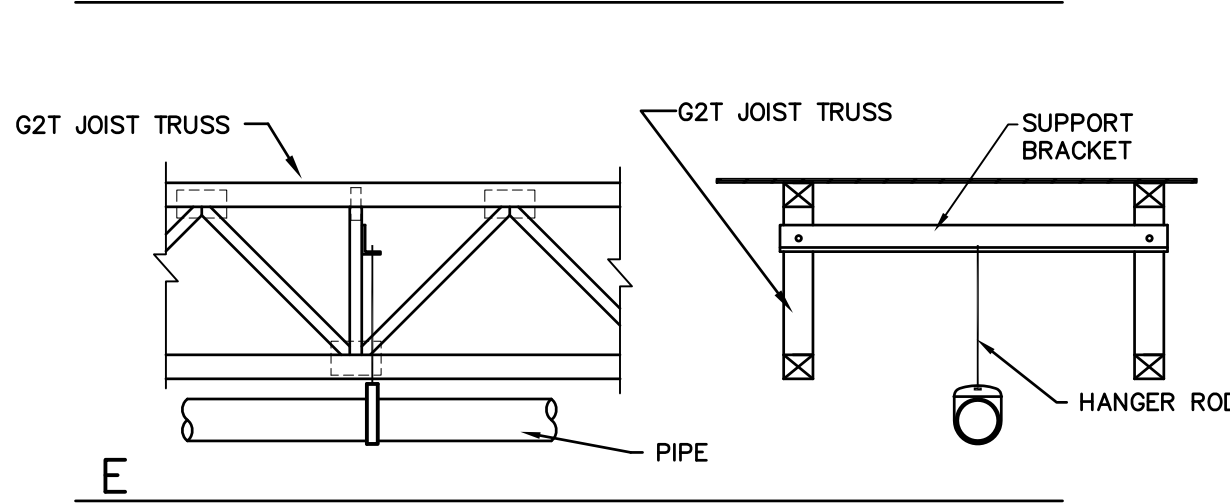
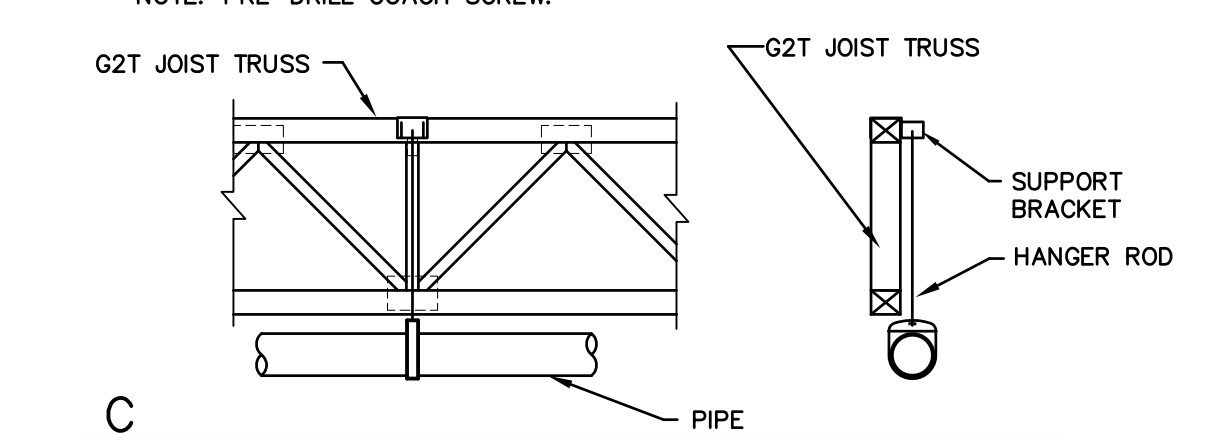
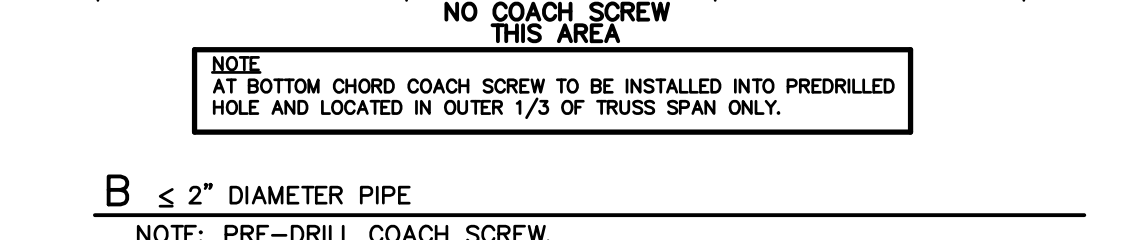
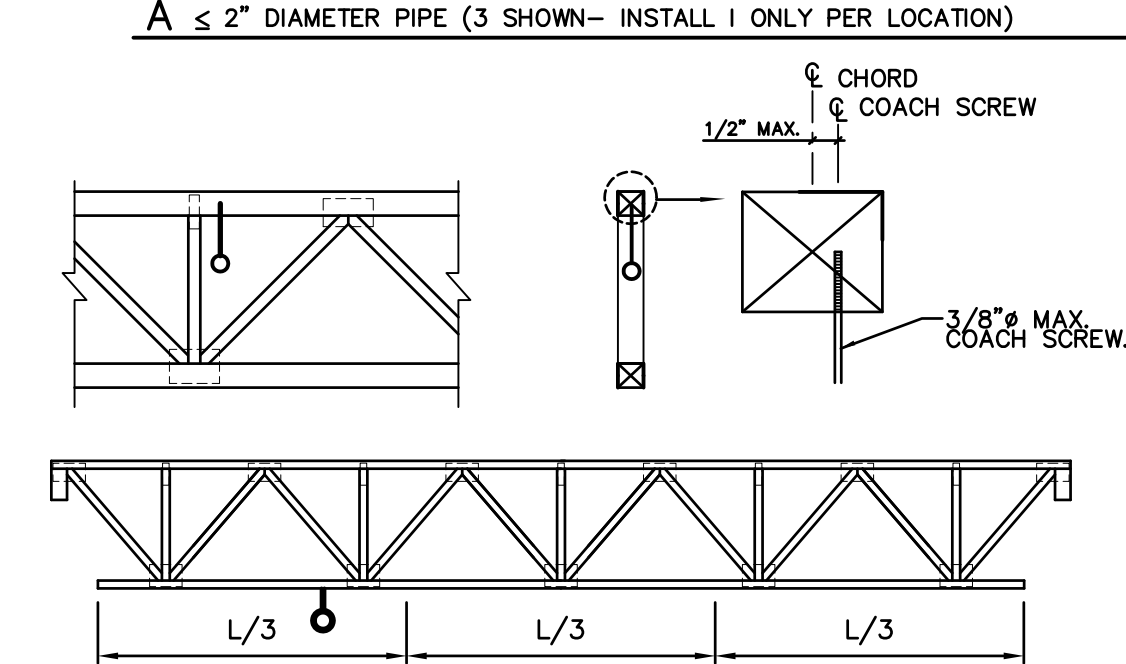
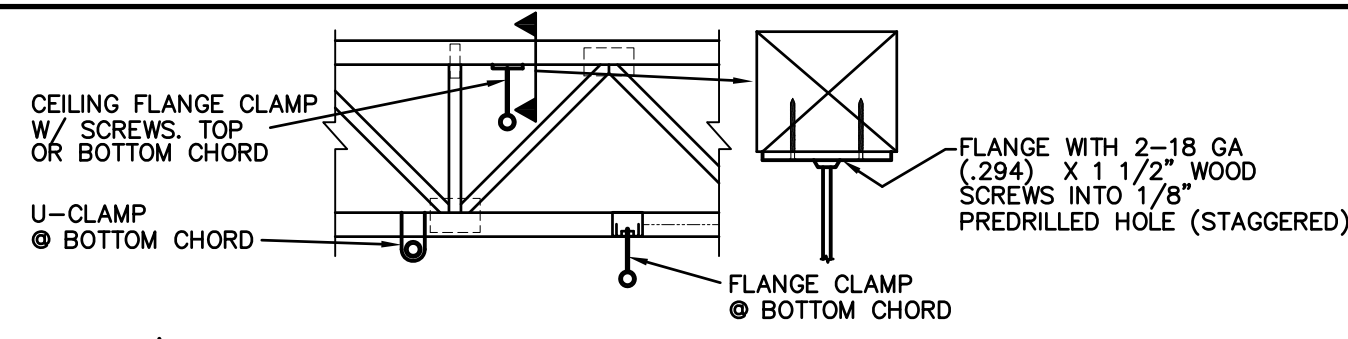
2 MECHANICAL LOADS ON G2T TRUSSES

G2T TRUSS NAILING CHART (MINIMUM ON CENTER SPACING)

NAIL TYPE	NAIL SIZE	MSR (M)		LSL (L)		LVL (V)			
		FACE	EDGE	FACE	EDGE	FACE	EDGE		
8d	BOX	0.113"x2 1/2"	2"	2"	3"	3"	1"	2"	1"
	COMMON	0.131"x2 1/2"	2"	2"	3"	3"	1"	3"	1"
10d	BOX	0.128"x3"	2"	2"	3"	3"	1"	3"	1"
	COMMON	0.148"x3"	3"	4"	3"	4"	1"	4"	1"
12d	BOX	0.128"x3 1/4"	3"	2"	3"	3"	1"	3"	1"
	COMMON	0.148"x3 1/4"	3"	4"	3"	4"	1"	4"	1"
16d	BOX	0.135"x3 1/2"	3"	3"	3"	4"	2"	3"	2"
	SINKER	0.148"x3 1/4"	3"	4"	3"	4"	2"	4"	2"
COMMON	0.162"x3 1/2"	4"	6"	3"	6"	2"	6"	2"	

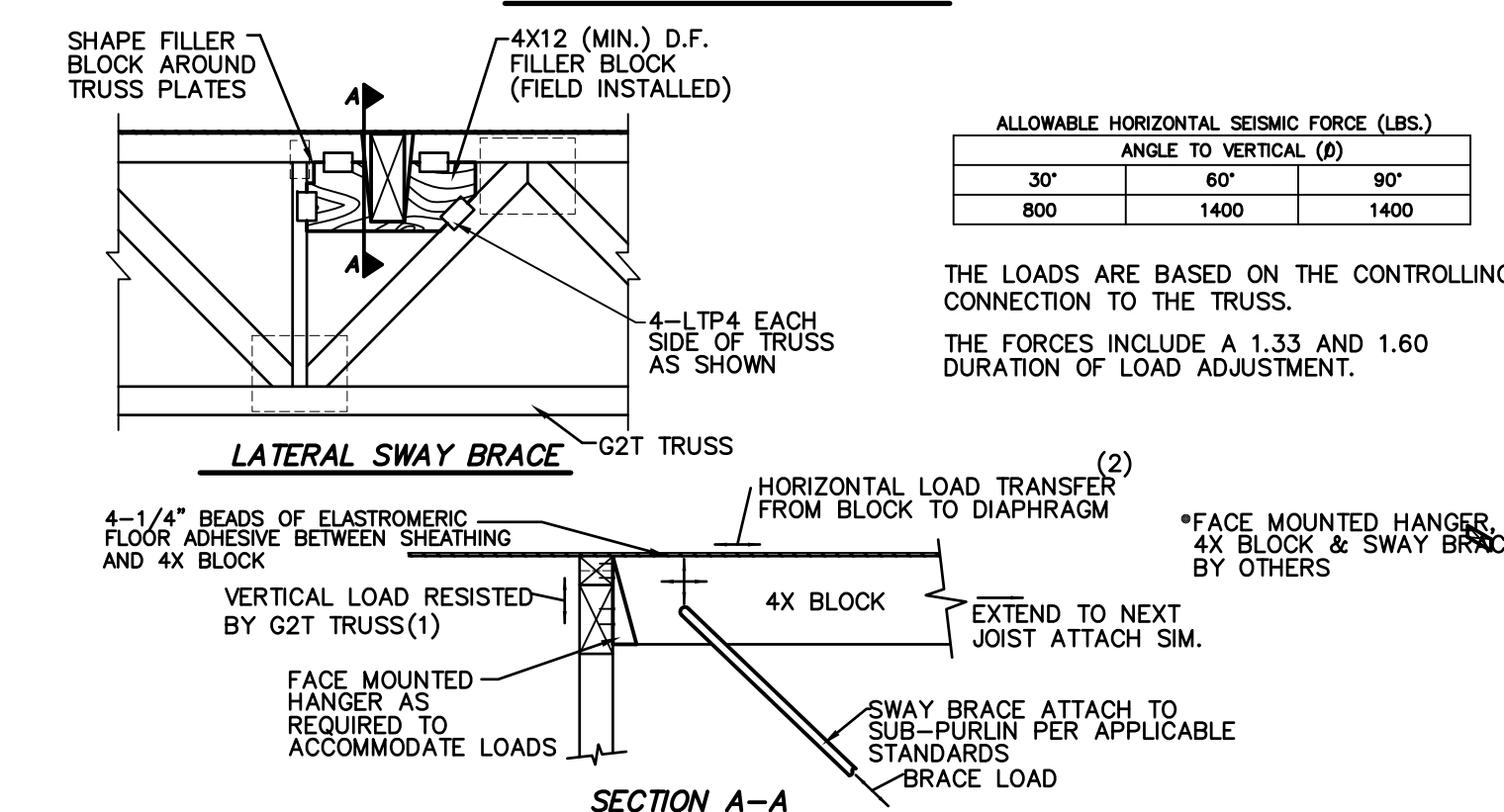
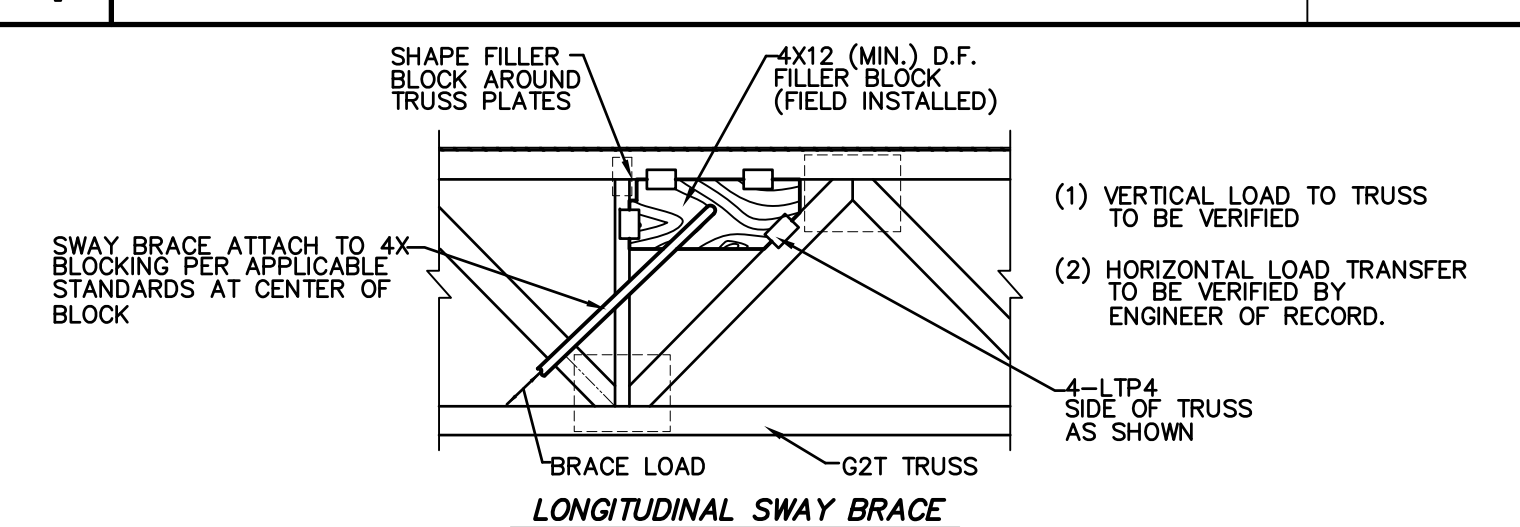


3 NAILING CHART

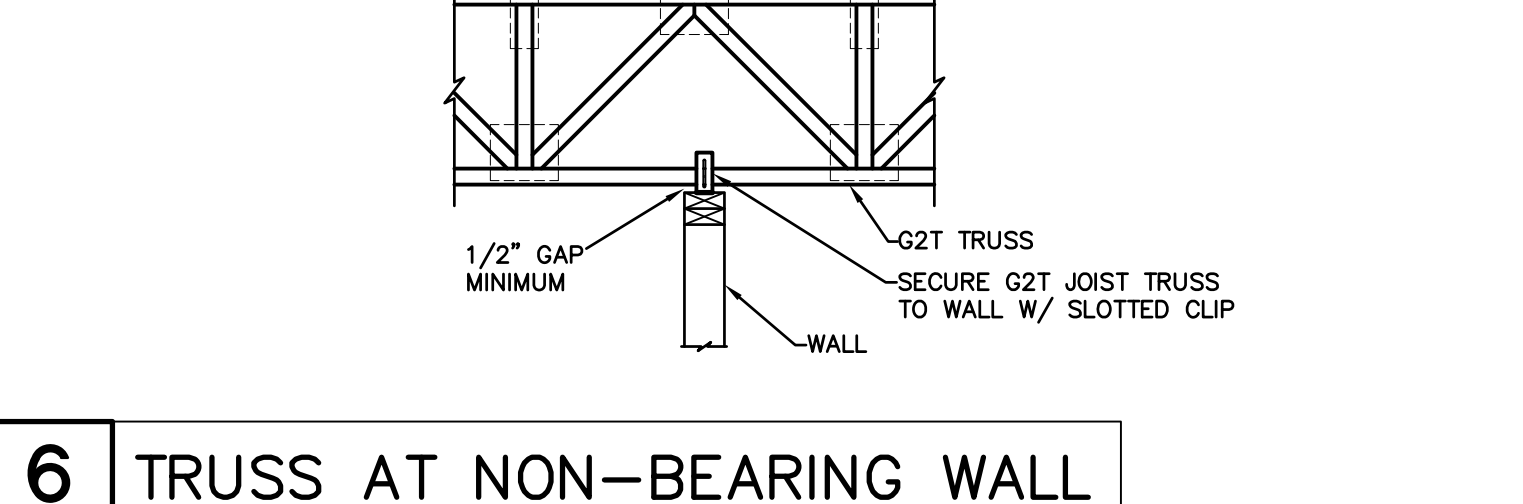
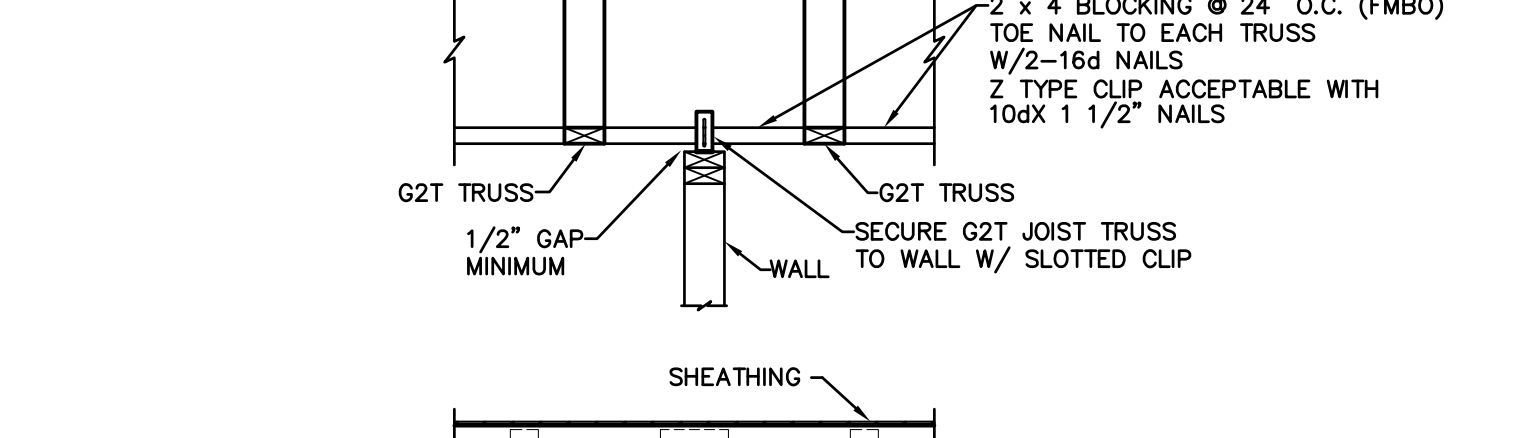
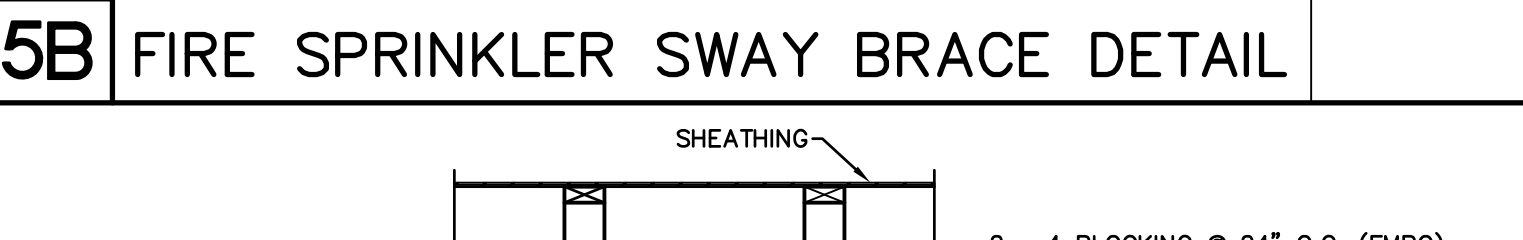
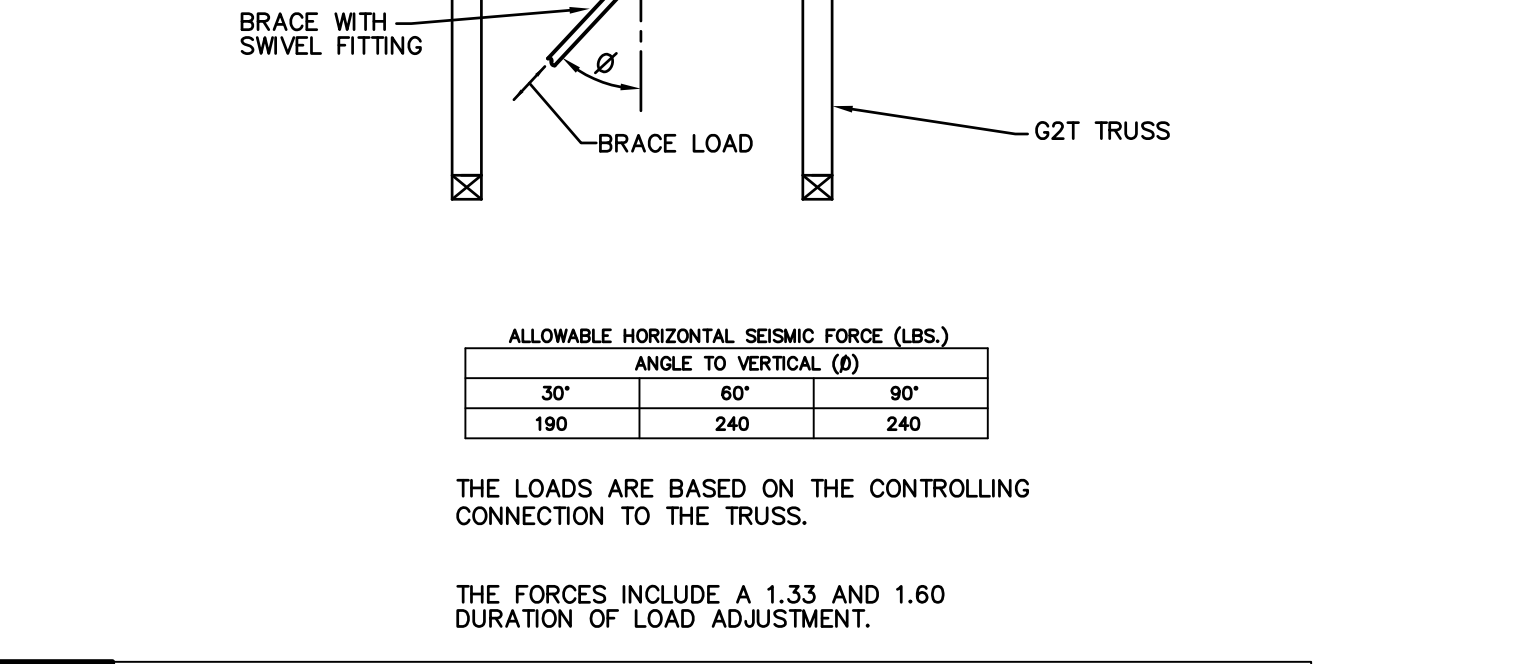
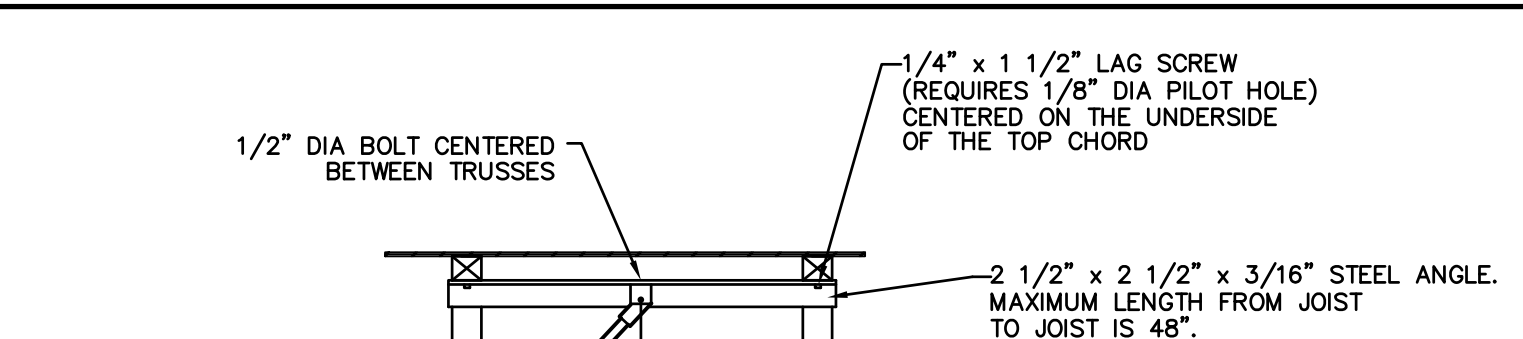


- NOTES:**
- WOOD SCREWS WITH A MAXIMUM DIAMETER OF 1/8" MAY BE USED ANYWHERE ON THE TOP CHORD OF THE PCT TRUSS WITH A PRE-DRILLED PILOT HOLE, UNLESS NOTED OTHERWISE ON PLANS.
 - DO NOT DRILL HOLES, DRIVE HEAVY SCREWS, OR USE LAG BOLTS IN THE BOTTOM CHORD OF G2T TRUSS, EXCEPT AS NOTED.
 - COORDINATE ATTACHMENT OF SPRINKLER PIPE GREATER THAN 3" DIAMETER AND LARGER WITH G2T TRUSS LAYOUT AND CALCULATIONS. IT IS ASSUMED THAT THE ENGINEER OF RECORD HAS ALLOWED FOR BRANCH SPRINKLER LINES 3" DIAMETER AND LESS IN THE DESIGN DEAD LOAD.
 - ALL SPRINKLER AND SPRINKLER ATTACHMENTS INCLUDING WOOD SUPPORTS ARE TO BE FURNISHED AND INSTALLED BY OTHERS.

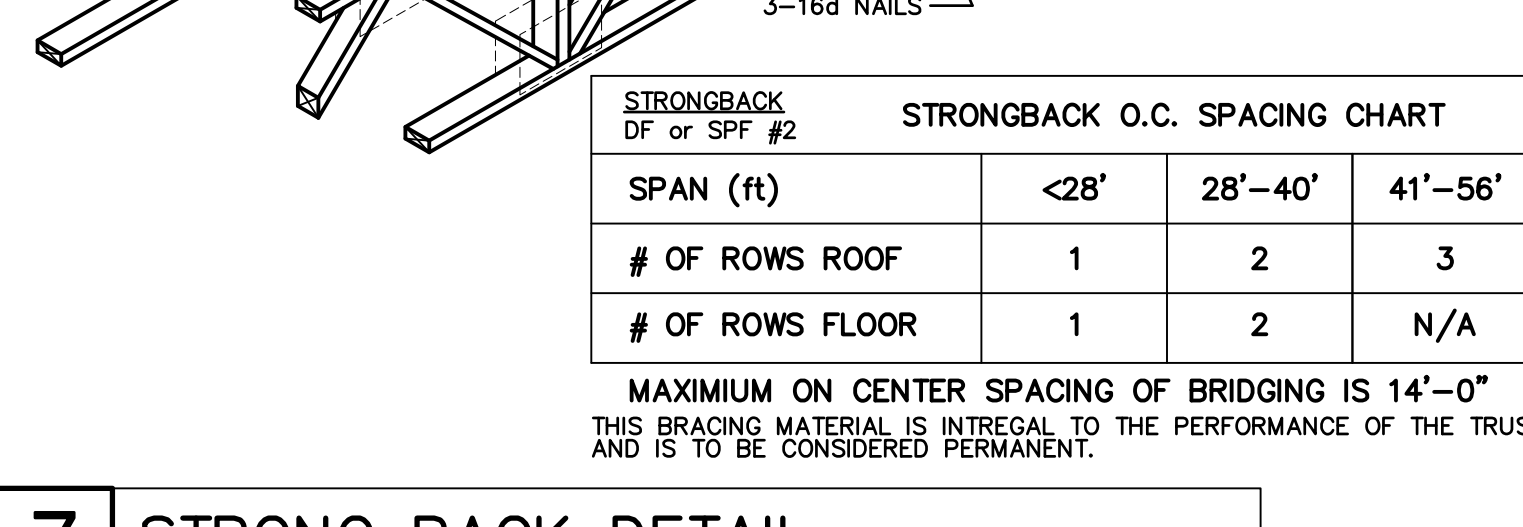
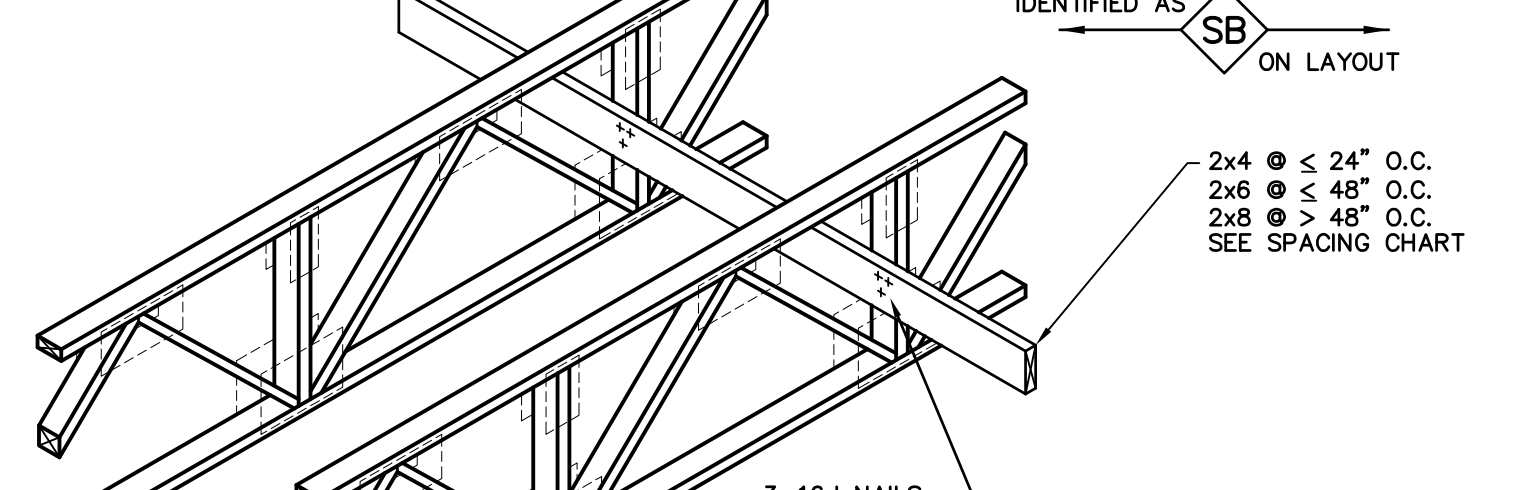
4 FIRE SPRINKLER ATTACHMENT DETAIL



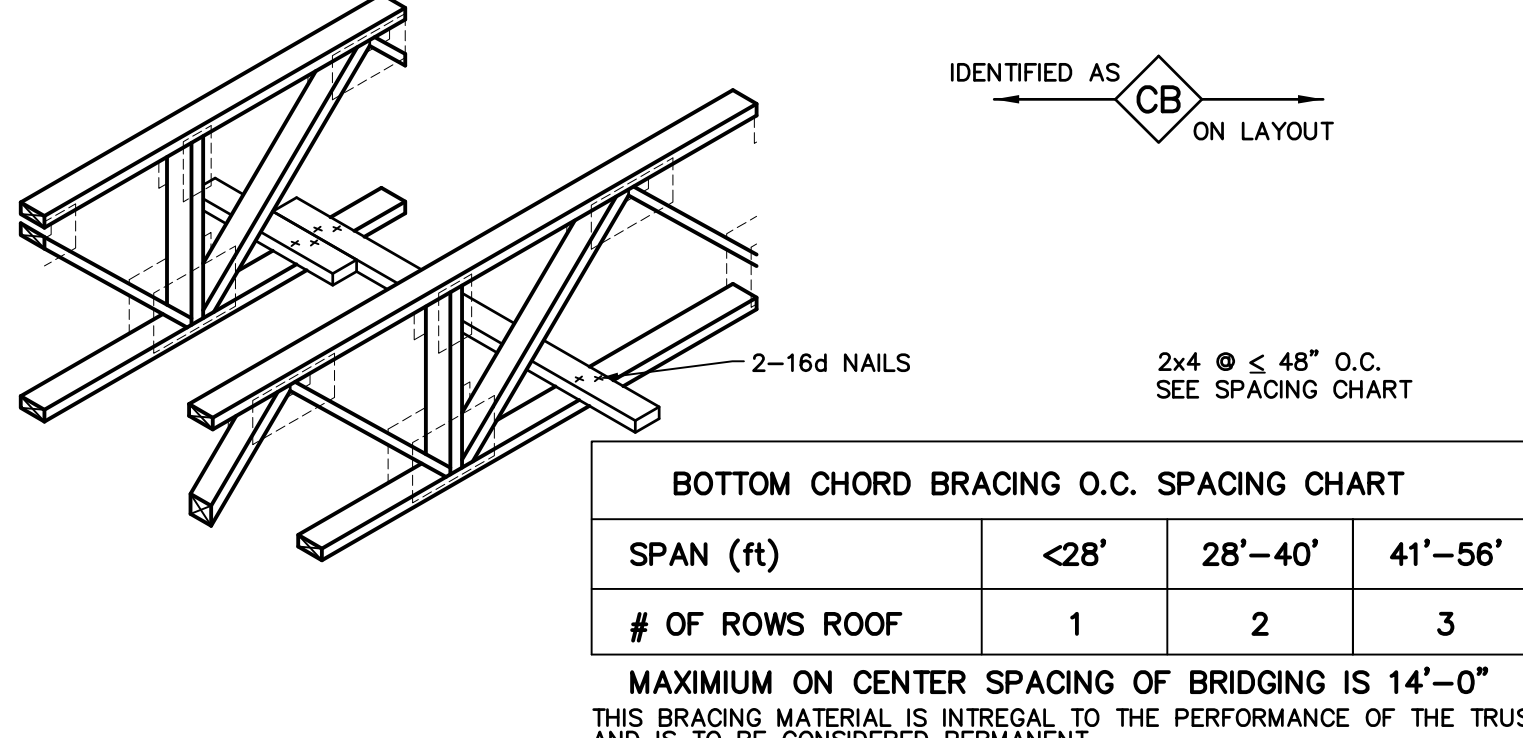
5A FIRE SPRINKLER SWAY BRACE DETAIL



6 TRUSS AT NON-BEARING WALL



7 STRONG BACK DETAIL



8 BOTTOM CHORD BRACING DETAIL

G2T OPEN WEB TRUSS

JOB SITE HANDLING

OF G2T OPEN WEB TRUSSES

IT IS THE BUILDING CONTRACTOR'S RESPONSIBILITY TO UNLOAD THE G2T TRUSSES FROM THE TRUCK AND FOR ALL HANDLING THEREAFTER. THE G2T OPEN WEB TRUSS GUARANTEE ONLY APPLIES AS LONG AS THE PRODUCT IS NOT DAMAGED OR ALTERED IN ANY WAY. IS INSTALLED IN A WORKMANLIKE MANNER AND ACCORDING TO THE INSTALLATION INFORMATION NOTED HEREIN. G2T TRUSSES WILL BE DELIVERED TO THE JOBSITE IN BUNDLES Banded TOGETHER FOR HANDLING EASE TO AVOID DAMAGE. TRUSSES SHOULD BE LEFT IN THESE BUNDLES UNTIL READY FOR INSTALLATION IN THE STRUCTURE. A CARELESS CRANE OR FORKlift OPERATOR CAN DAMAGE G2T TRUSSES. NEVER HANDLE G2T TRUSSES FLAT - KEEP IN AN UPRIGHT POSITION.

STORAGE OF G2T OPEN WEB TRUSSES

DURING STORAGE AT THE JOBSITE, KEEP G2T TRUSSES IN AN UPRIGHT POSITION. THE BUNDLES SHOULD BE SUPPORTED ON LEVEL STICKERS TO KEEP THE G2T TRUSSES OUT OF THE MUD AND DIRT. STACKING OF BUNDLES IS PERMITTED IF AN ADEQUATE NUMBER OF STICKERS ARE PROVIDED TO PREVENT DAMAGE AND NORMAL SAFETY PRECAUTIONS ARE FOLLOWED. ALL GLUE USED IN G2T TRUSSES IS WATER PROOF. HOWEVER, LONG EXPOSURE TO WATER AND SUN WILL CAUSE SOME DETERIORATION AND CHECKING OF WOOD. G2T TRUSSES SHOULD RECEIVE THE SAME PROTECTION FROM WEATHER AS OTHER WOOD PRODUCTS.

TYPICAL G2T PROJECT NOTES:

- FOR NOTES, DETAILS, AND DIMENSIONS NOT ON THESE PRODUCT PLACEMENT PLAN DRAWINGS, REFER TO PRODUCT PLANS.
- SEE BILLS OF MATERIAL FOR ITEMS FURNISHED.
- ALL CLOUDED NOTES, DIMENSIONS, ETC. REQUIRE VERIFICATION AND MUST BE MARKED ON THE CORRECT INFORMATION PROVIDED BY CUSTOMER, PRIOR TO RETURN TO BEING RETURNED FOR FABRICATION.
- PLEASE BE AWARE THAT ANY CLOUDED ITEMS NOT ACKNOWLEDGED WILL REQUIRE CONTACT WITH RESPONSIBLE PARTIES AND MAY CAUSE DELAY IN THE PROCESSING OF YOUR ORDER.
- PLEASE VERIFY THAT ALL INFORMATION PROVIDED HEREWITH REFLECTS THE LATEST AVAILABLE PROJECT INFORMATION AND THAT ALL G2T TRUSS LENGTHS CORRESPOND WITH ACTUAL FIELD DIMENSIONS PRIOR TO BEING RETURNED FOR FABRICATION.
- ALL BRACING SHOWN IS INTEGRAL TO THE G2T OPEN WEB TRUSS SYSTEM AND IS NOT TEMPORARY OR ERECTION BRACING. THE PCT OPEN WEB TRUSS WILL NOT SAFELY SUPPORT LOADS UNTIL FULLY BRACED, FULLY ATTACHED TO BEARING WALLS OR BEAMS, AND SHEATHING, IS PROPERLY INSTALLED (SEE LAYOUTS AND DETAILS).
- POINT LOADS THAT EXCEED 100 LBS. AS INDICATED ON THE PLACEMENT PLAN HEREIN.
- INSTALLATION OF G2T OPEN WEB TRUSSES MUST FOLLOW ANY ADDITIONAL REQUIREMENTS INDICATED ON THE PLACEMENT PLAN AND IN THE CALCULATIONS.
- ALL G2T OPEN WEB TRUSSES ARE DESIGNED FOR UNIFORM LOADS AND CONCENTRATED LOADS NOTED ON THESE DRAWINGS AND CALCULATIONS. TEMPORARY CONSTRUCTION LOADS WHICH CAUSE STRESSES BEYOND DESIGN CRITERIA ARE NOT PERMITTED.
- ALL 2X, 4X, 6X ETC. FRAMING TO BE SUPPLIED BY OTHERS, UNO. (FMBO).
- METAL STRAPS AND/OR TIES USED FOR SEISMIC PURPOSES THAT ARE NAILED TO THE TOP OF THE TOP CHORD ARE TO USE 10d NAILING AT NO LESS THAN 3" oc IN A ROW UNO. ACCEPTABLE STRAPS FOR G2T TOP CHORDS ARE LTI, LSTI, MSTI AND PAI OR OTHER COMPARABLE ITEMS UNO.
- G2T OPEN WEB TRUSSES ARE NOT DESIGNED TO SUPPORT ANY FIRE SPRINKLER AND/OR MECHANICAL LOADS OTHER THAN WHAT IS SHOWN WITHIN THESE DRAWINGS, AND OR WHAT HAS BEEN PROVIDED IN THE DESIGN DEAD LOAD(S).
- THE PLACEMENT OF THE MECHANICAL UNITS AND SPRINKLER MAINS ARE TO BE AS NOTED ON THE PLACEMENT PLAN. THE SUPPORTING TRUSSES HAVE BEEN SPECIFICALLY DESIGNED TO ACCOMMODATE THESE ITEMS. ALL COMPONENTS TRANSFERRING LOADS TO THE TRUSSES SHALL BE DESIGNED AND INSTALLED IN ACCORDANCE WITH THE DETAILS CONTAINED WITHIN THESE DRAWINGS. IF THE ACTUAL LOCATIONS DO NOT COINCIDE WITH THESE DRAWINGS CONTACT THE MANUFACTURER.
- G2T TRUSS DESIGNS ARE IN ACCORDANCE WITH THE CURRENT ADOPTED EDITION OF THE IBC, CBC, AND NATIONAL DESIGN SPECIFICATION, AND CONFORM TO CURRENT ICC-ES REPORT.

LEGEND / ABBREVIATIONS

SEE PROJECT PLANS FOR OTHER ABBREVIATIONS AND SYMBOLS USED.

□ DETAIL (ON SHOP DRAWINGS)

○ PROJECT PLAN DETAIL (PER PLANS)

● START G2T TRUSS LAYOUT @ o/c SPACING

➔ DIRECTION OF ROOF SLOPE

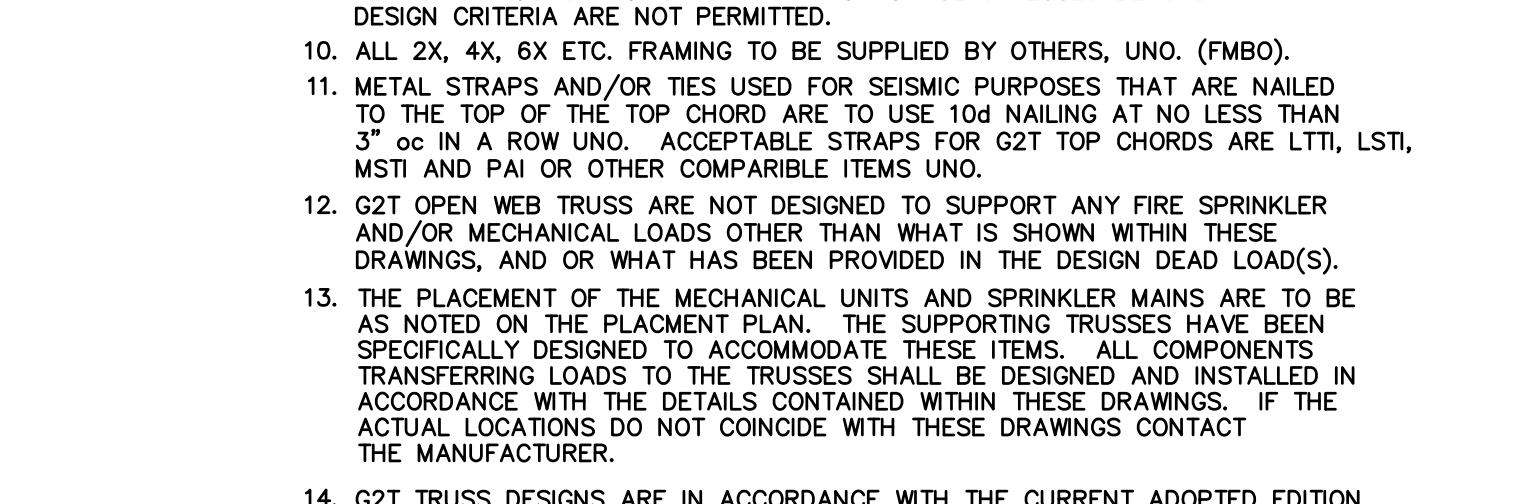
FMBO = FRAMING MATERIAL BY OTHERS
VF = VERIFY IN FIELD
VIC = NOT IN CONTRACT
UNO = UNLESS NOTED OTHERWISE
FSML = FIRE SPRINKLER MAIN LINE
FIT = FACE TO FACE (CLEAR SPAN OF TRUSS)
MTL = MANUFACTURED TRUSS LENGTH
OTCL = OVERALL TOP CHORD LENGTH (SLOPE LENGTH)
LBS = POUNDS
PSF = POUNDS PER SQUARE FOOT
PLF = POUNDS PER LINEAL FOOT
MFR = MANUFACTURER
> = GREATER THAN (< = LESS THAN)
1/2" O.C. = ON CENTER SPACING
BOM = BILL(S) OF MATERIAL
DBL = DOUBLE MEMBER (TPL = TRIPLE MEMBER)

DO NOT CUT, DRILL OR NOTCH CHORDS AND WEB MEMBERS

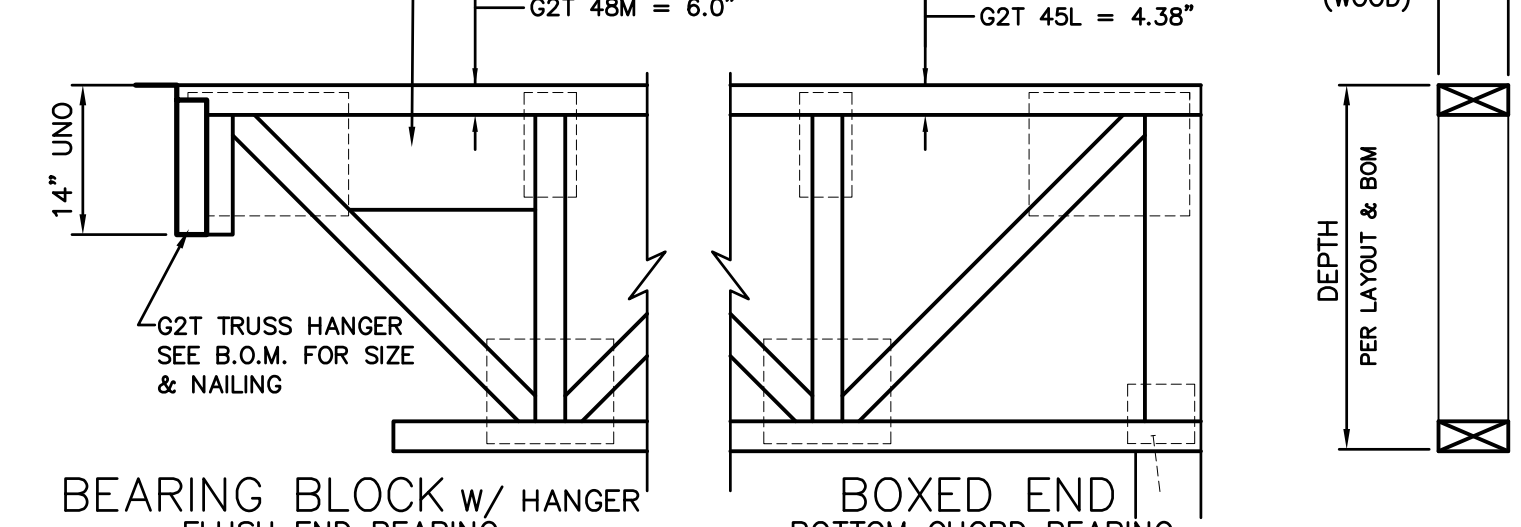
M DENOTES MACHINE STRESS RATED (MSR) LUMBER CHORDS STRUCTURALLY FINGER JOINTED INTO A CONTINUOUS MEMBER. MULTIPLE PLIES ARE FACE BONDED CREATING A CONTINUOUS AND MONOLITHIC MEMBER.

L DENOTES LAMINATED STRAND LUMBER (LSL) CHORDS ALL MEMBERS CONTINUOUS AND MONOLITHIC (NO SPLICES)

V DENOTES LAMINATED VENEER LUMBER (LVL) CHORDS ALL MEMBERS CONTINUOUS AND MONOLITHIC (NO SPLICES)



G2T	MSR (M)	LSL (L)	LVL (V)
G2T 42M	1.5"		
G2T 43M	3.0" TC 1.5" BC		
G2T 44M	3.0"		
G2T 45M	4.5" TC 3" BC	G2T 43L = 2.5"	
G2T 46M	4.5"	G2T 44L = 3.5"	
G2T 47M	6.0" TC 4.5" BC	G2T 44V = 3.5"	
G2T 48M	6.0"	G2T 45L = 4.38"	



9 G2T TRUSS NOTES AND PROFILES

LEGEND / ABBREVIATIONS

SEE PROJECT PLANS FOR OTHER ABBREVIATIONS AND SYMBOLS USED.

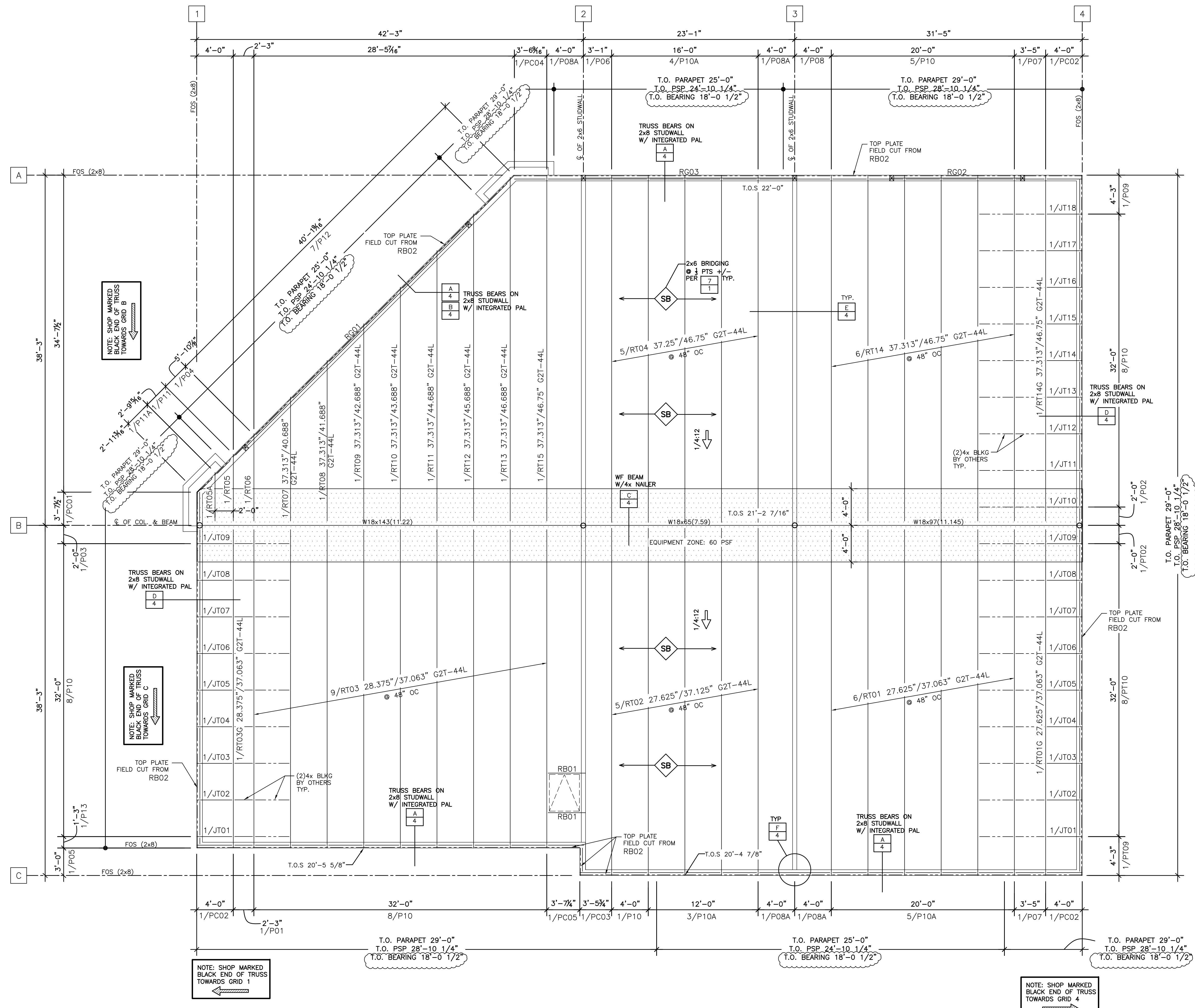
□ DETAIL (ON SHOP DRAWINGS)

○ PROJECT PLAN DETAIL (PER PLANS)

● START G2T TRUSS LAYOUT @ o/c SPACING

➔ DIRECTION OF ROOF SLOPE

FMBO = FRAMING MATERIAL BY OTHERS
VF = VERIFY IN FIELD
VIC = NOT IN CONTRACT
UNO = UNLESS NOTED OTHERWISE
FSML = FIRE SPRINKLER MAIN LINE
FIT = FACE TO FACE (CLEAR SPAN OF TRUSS)
MTL = MANUFACTURED TRUSS LENGTH
OTCL = OVERALL TOP CHORD LENGTH (SLOPE LENGTH)
LBS = POUNDS
PSF = POUNDS PER SQUARE FOOT
PLF = POUNDS PER LINEAL FOOT
MFR = MANUFACTURER
> = GREATER THAN (< = LESS THAN)
1/2" O.C. = ON CENTER SPACING
BOM = BILL(S) OF MATERIAL
DBL = DOUBLE MEMBER (TPL = TRIPLE MEMBER)



PROJECT PLANS USED:	
SHEETS	DATE
ARCHITECTURAL DRAWINGS	
A-0.0 THRU A5.0	01/23/19
STRUCTURAL DRAWINGS	
S-0.10 THRU S02.0	12/28/18
MECHANICAL DRAWINGS	
M-1 THRU M-2	01/11/19

DESIGN LOADS	
LOAD	ROOF
LIVE LOAD	20 PSF
DEAD LOAD	20 PSF
TOTAL LOAD	40 PSF

DESIGN DEFLECTION:
 $\Delta_L \leq L/240$ $\Delta_L \leq L/180$
 LOAD DURATION FACTOR = 1.25
 DESIGN CODE: CBC 2016
 DEAD LOAD BREAKDOWN: 18 PSF TC
 110 MPH WIND, EXP. C 4 PSF BC
 ROOF LIVE LOAD REDUCIBLE PER CODE
 - ADDITIONAL 500# MISC POINT LOAD OCCURRING AT ANY ONE TOP CHORD PANEL POINT ALONG THE SPAN, CONCURRENT WITH UNIFORM DEAD LOAD AND LIVE LOAD ONLY.

NOTE: SPRINKLER LINES GREATER THAN 3" DIAMETER HAVE NOT BEEN CONSIDERED IN THE TRUSS DESIGNS

BILL OF MATERIALS REFER TO SHEET 3/4

ROOF PRODUCT PLACEMENT PLAN

(REF: S-2.0)
 SCALE: 3/16" = 1'-0"

FOR APPROVAL ONLY
 NOT FOR CONSTRUCTION

ALL ITEMS THAT ARE CLOUDED MUST BE REVIEWED AND INDICATED AS BEING OK OR THE CORRECT INFORMATION PROVIDED. IF NO CORRECTIONS ARE MADE, G2 WILL MANUFACTURE OR PROVIDE PRODUCT BASED ON THE INFORMATION SHOWN ON THESE SHOP DRAWINGS

REVISIONS	
5-7-19	Per revised project plans and roof slope change

WOODLAND GATEWAY SHOPS 6
 2061 BRONZE STAR DR.
 WOODLAND, CA 95776

ENGINEER
 CORP
 849-942-7246

ARCHITECT
 URBAN ARENA
 714-754-4500

CUSTOMER
 PETROVICH DEVELOPMENT
 916-442-6000

G2 NATIONAL

Evolution in Wood-Framed Structure.[®]
 2765 GREENHURST DRIVE #212 SEABRKS, NEVADA 89431

05/13/2019
 PN-14211
 SHEET
 2 OF 4

G2T TRUSS LIST Δ						
MARK	QTY	CLR SPAN	MFR LENGTH	DEPTH/SERIES	HANGER (BLACK END)	HANGER (OTHER END)
RT01G	1	37'-1 15/16"	37'-9 1/16"	27.625"/37.063" G2T-44L	-	PHXU3.6214
RT01	6	37'-1 15/16"	37'-9 1/16"	27.625"/37.063" G2T-44L	-	PHXU3.6214
RT02	5	37'-3 11/16"	37'-10 13/16"	27.625"/37.125" G2T-44L	-	PHXU3.6214
RT03G	1	34'-1 7/8"	34'-9"	28.375"/37.063" G2T-44L	-	PHXU3.6214
RT03	9	34'-1 7/8"	34'-9"	28.375"/37.063" G2T-44L	-	PHXU3.6214
RT04	5	37'-3 11/16"	37'-10 13/16"	37.25"/46.75" G2T-44L	PHXU3.6214	-
RT05A	1	4'-3 1/4"	5'-3 1/4"	37.313"/38.625" G2T-44L	PHXU3.6214	-
RT05	1	6'-3 1/4"	7'-3 1/4"	37.313"/39.125" G2T-44L	PHXU3.6214	-
RT06	1	8'-6 1/4"	9'-6 1/4"	37.313"/39.688" G2T-44L	PHXU3.6214	-
RT07	1	12'-6 1/4"	13'-6 1/4"	37.313"/40.688" G2T-44L	PHXU3.6214	-
RT08	1	16'-6 1/4"	17'-6 1/4"	37.313"/41.688" G2T-44L	PHXU3.6214	-
RT09	1	20'-6 1/4"	21'-6 1/4"	37.313"/42.688" G2T-44L	PHXU3.6214	-
RT10	1	24'-6 1/4"	25'-6 1/4"	37.313"/43.688" G2T-44L	PHXU3.6214	-
RT11	1	28'-6 1/4"	29'-6 1/4"	37.313"/44.688" G2T-44L	PHXU3.6214	-
RT12	1	32'-6 1/4"	33'-6 1/4"	37.313"/45.688" G2T-44L	PHXU3.6214	-
RT13	1	36'-6 1/4"	37'-6 1/4"	37.313"/46.688" G2T-44L	PHXU3.6214	-
RT14G	1	37'-1 15/16"	37'-9 1/16"	37.313"/46.75" G2T-44L	PHXU3.6214	-
RT14	6	37'-1 15/16"	37'-9 1/16"	37.313"/46.75" G2T-44L	PHXU3.6214	-
RT15	1	37'-1 7/8"	37'-9"	37.313"/46.75" G2T-44L	PHXU3.6214	-

G2T-J TRUSS LIST Δ						
MARK	QTY	CLR SPAN	MFR LENGTH	DEPTH/SERIES	HANGER (BLACK END)	HANGER (OTHER END)
JT01	2	3'-2 3/4"	3'-10 1/16"	28.688" G2T-44L-J	-	SUH414
JT02	2	3'-2 3/4"	3'-10 1/16"	29.688" G2T-44L-J	-	SUH414
JT03	2	3'-2 3/4"	3'-10 1/16"	30.688" G2T-44L-J	-	SUH414
JT04	2	3'-2 3/4"	3'-10 1/16"	31.688" G2T-44L-J	-	SUH414
JT05	2	3'-2 3/4"	3'-10 1/16"	32.688" G2T-44L-J	-	SUH414
JT06	2	3'-2 3/4"	3'-10 1/16"	33.688" G2T-44L-J	-	SUH414
JT07	2	3'-2 3/4"	3'-10 1/16"	34.688" G2T-44L-J	-	SUH414
JT08	2	3'-2 3/4"	3'-10 1/16"	35.688" G2T-44L-J	-	SUH414
JT09	2	3'-2 3/4"	3'-10 1/16"	36.688" G2T-44L-J	-	SUH414
JT10	1	3'-2 3/4"	3'-10 1/16"	37.688" G2T-44L-J	-	SUH414
JT11	1	3'-2 3/4"	3'-10 1/16"	38.688" G2T-44L-J	-	SUH414
JT12	1	3'-2 3/4"	3'-10 1/16"	39.688" G2T-44L-J	-	SUH414
JT13	1	3'-2 3/4"	3'-10 1/16"	40.688" G2T-44L-J	-	SUH414
JT14	1	3'-2 3/4"	3'-10 1/16"	41.688" G2T-44L-J	-	SUH414
JT15	1	3'-2 3/4"	3'-10 1/16"	42.688" G2T-44L-J	-	SUH414
JT16	1	3'-2 3/4"	3'-10 1/16"	43.688" G2T-44L-J	-	SUH414
JT17	1	3'-2 3/4"	3'-10 1/16"	44.688" G2T-44L-J	-	SUH414
JT18	1	3'-2 3/4"	3'-10 1/16"	45.688" G2T-44L-J	-	SUH414

PARAPET SHEAR PANELS (PSP SM) LIST Δ				
MARK	QTY	LENGTH	HEIGHT	SERIES
P01	1	1'-11 3/8"	10'-9 3/4"	PSP8
P02	2	1'-4 9/16"	10'-9 3/4"	PSP8
P03	1	1'-4 1/2"	10'-9 3/4"	PSP8
P04	1	2'-3 7/8"	6'-9 3/4"	PSP8
P05	1	2'-6 3/8"	10'-9 3/4"	PSP8
P06	1	2'-11 1/8"	6'-9 3/4"	PSP8
P07	2	3'-1 3/8"	10'-9 3/4"	PSP8
P08A	4	3'-10 1/8"	6'-9 3/4"	PSP8
P08	1	3'-10 1/8"	10'-9 3/4"	PSP8
P09	2	3'-7 5/8"	10'-9 3/4"	PSP8
P10A	12	3'-8 3/8"	6'-9 3/4"	PSP8
P10	38	3'-8 3/8"	10'-9 3/4"	PSP8
P11A	1	1'-8 1/4"	10'-9 3/4"	PSP8
P11	1	1'-11 5/8"	10'-9 3/4"	PSP8
P12	7	4'-9 9/16"	6'-9 3/4"	PSP8
P13	1	7 5/8"	10'-9 3/4"	PSP8
PC01	1	3'-1 3/4"	10'-9 3/4"	PSP8
PC02	3	3'-10 1/8"	10'-9 3/4"	PSP8
PC03	1	3'-3 7/8"	10'-9 3/4"	PSP8
PC04	1	3'-4 11/16"	10'-9 3/4"	PSP8
PC05	1	3'-4 11/16"	10'-9 3/4"	PSP8

GLULAM INDUSTRIAL APPEARANCE GRADE UNO					
QTY	MARK	WIDTH	DEPTH	LENGTH	CAMBER
1	RG01	8 3/4	22 1/2	35'-6"	3500'
1	RG02	8 3/4	18	15'-0"	3500'
1	RG03	8 3/4	18	24'-0"	3500'

ROSEBURG FOREST PRODUCTS 2.0 LVL ESR-1210 Δ					
QTY	MARK	WIDTH	DEPTH	LENGTH	
2	RB01	3 1/2	11 7/8	5'-0"	
15	RB02	1 3/4	5 1/2	22'-0"	(FIELD CUT TOP PLATE)
22	RB03	5 1/4	5 1/4	11'-0"	(WEDGE FILLS AT PSP SHAPED)

USP/MITEK CONNECTORS Δ					
QTY	MARK	DESCRIPTION	NAILING		REMARKS
			HEADER	JOIST	
27	RH01	SUH414	6-16d	2-10d	SINGLE
27	RH02	SUH414 INVERTED	6-16d	2-10d	SINGLE
45	RH03	PHXU3.6214 W=3.625"	8-16d	6-10d	SINGLE
27	RH04	MSTA30	11-10d	11-10d	STRAP

PLYWOOD EDGE BLOCKING Δ			
QTY	MARK	DESCRIPTION	LENGTH
251	PEB1	3 X 4 NOM. W/ Z-CLIPS BOTH ENDS	3'-8 1/4"
82	PEB2	3 X 4 NOM. W/ Z-CLIPS ONE ENDS	3'-8 1/4"
82	ZC01	LOOSE Z-CLIPS	

MISC. MATERIAL LIST		
ITEM	QTY	USE
2x6 B/C BRACING	410 LF	STD G2T B/C BRACING (SEE DETAIL 7/1)

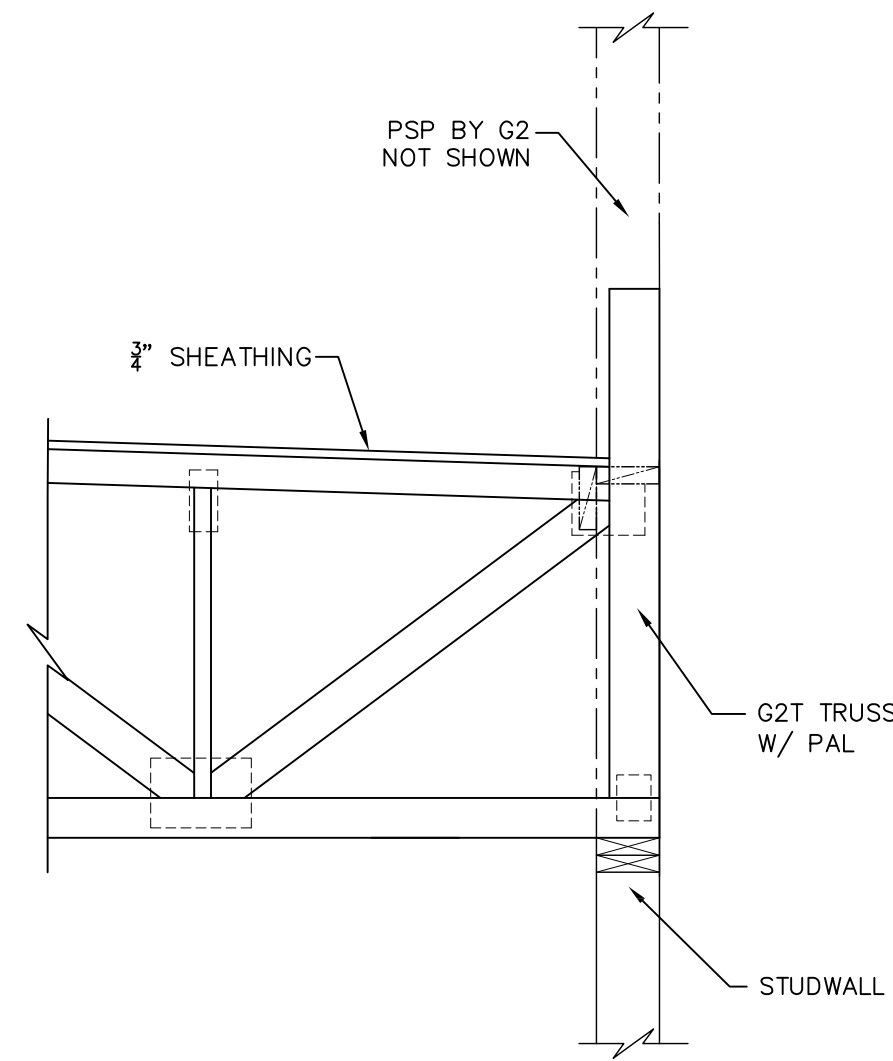
REVISIONS
Δ 5-7-19 Per revised project plans and roof slope change
Δ
Δ
Δ
Δ

WOODLAND GATEWAY SHOPS 6
 2061 BRONZE STAR DR.
 WOODLAND, CA 95776

ENGINEER
 CORP
 849-944-7244
 1800 W. STATE ST.
 URBAN ARENA
 714-754-4500
 CUSTOMER
 PETROVICH DEVELOPMENT
 916-442-6000

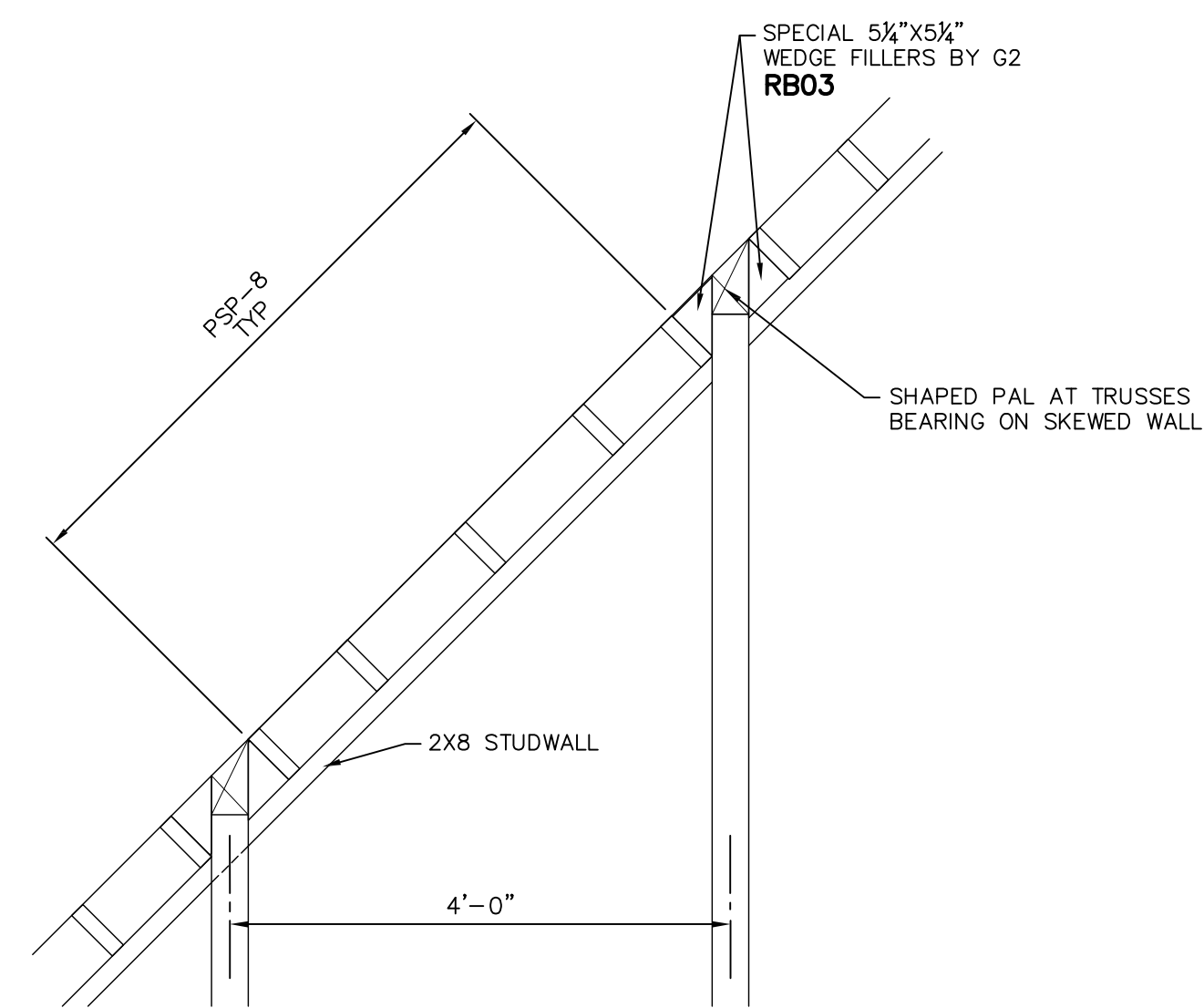
G2 NATIONAL
 Evolution in Wood-Framed Structure.[®]
 2768 GREENHILL DRIVE #212 SEABRKS, NEVADA 89431

FOR APPROVAL ONLY
 NOT FOR CONSTRUCTION
 ALL ITEMS THAT ARE CLOUDED MUST BE REVIEWED AND INDICATED AS BEING OK OR THE CORRECT INFORMATION PROVIDED. IF NO CORRECTIONS ARE MADE, G2 WILL MANUFACTURE OR PROVIDE PRODUCT BASED ON THE INFORMATION SHOWN ON THESE SHOP DRAWINGS



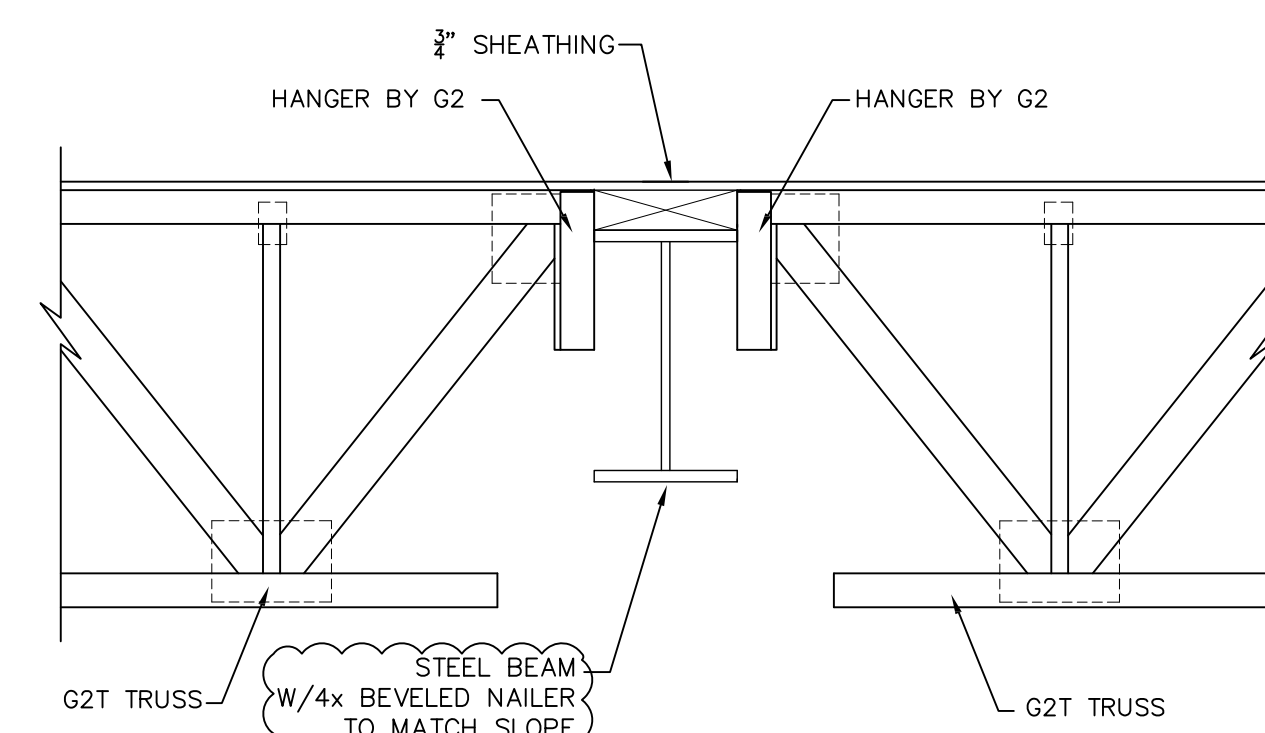
REF: 8/SD2.0

A
-



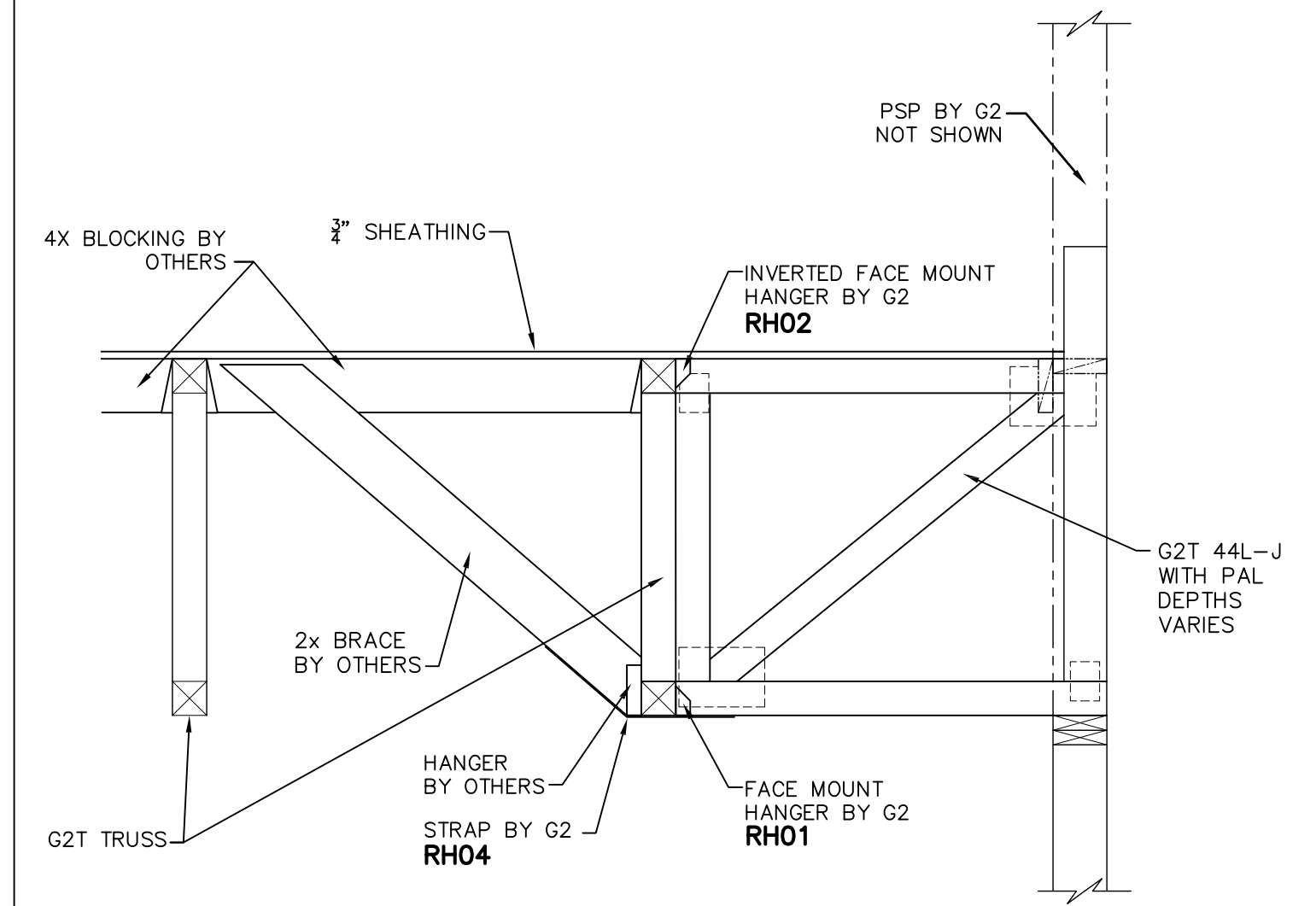
REF: 8/SD2.0

B
-



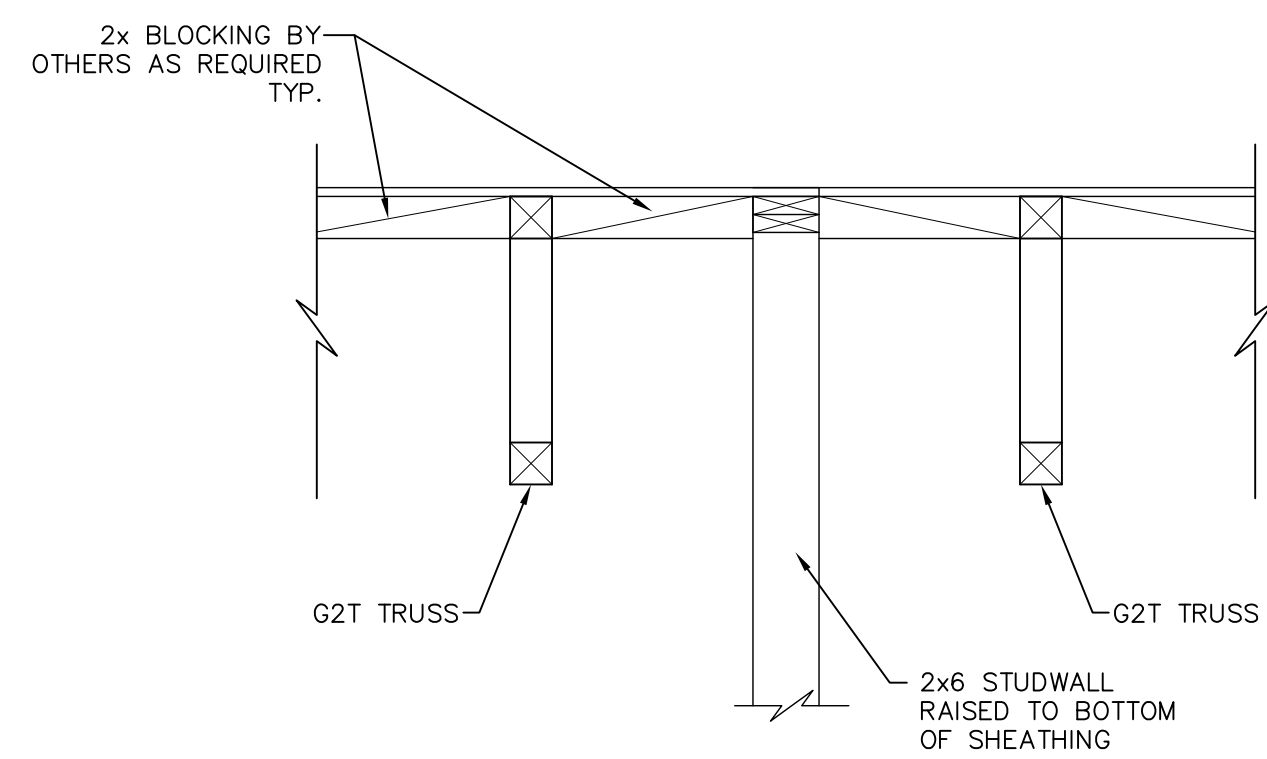
REF: 12/SD2.0

C
-



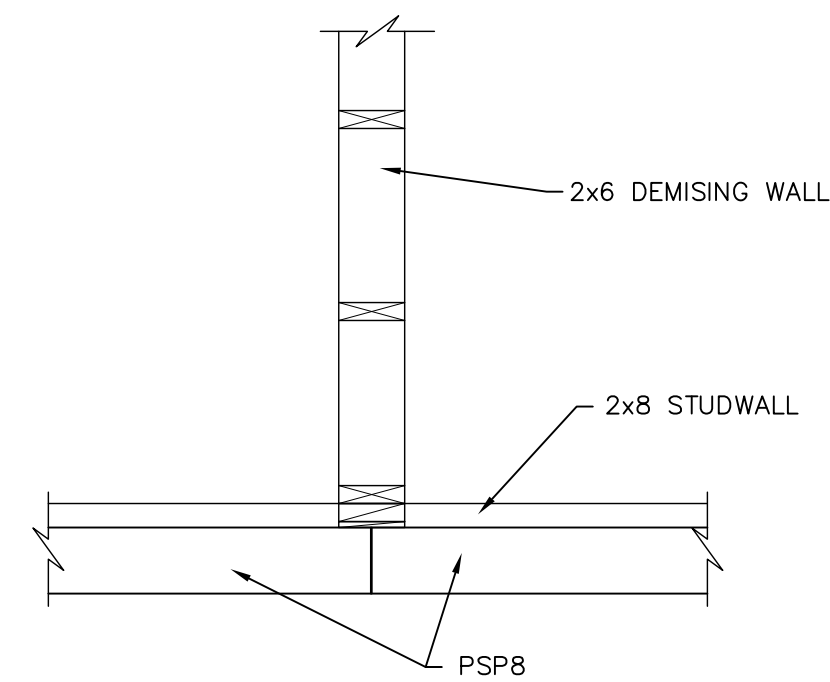
REF: 9/SD2.0

D
-



REF: 10/SD2.0

E
-



F
-

REVISIONS	
Δ	5-7-19
Δ	
Δ	
Δ	
Δ	

WOODLAND GATEWAY SHOPS 6
2061 BRONZE STAR DR.
WOODLAND, CA 95776

ENGINEER
CORE ENGINEERING INC.
949-941-7244

ARCHITECT
URBAN ARENA
714-754-4500

CUSTOMER
PETROVICH DEVELOPMENT
916-442-4000

G2 NATIONAL
Evolution in Wood-Framed Structure.[®]
G2 NATIONAL, LLC
2768 GREEN VISTA DRIVE # 212, SPARKS, NEVADA 89431.

PN-14211
SHEET
4 OF 4

FOR APPROVAL ONLY
NOT FOR CONSTRUCTION

ALL ITEMS THAT ARE CLOUDED MUST BE REVIEWED AND INDICATED AS BEING OK OR THE CORRECT INFORMATION PROVIDED. IF NO CORRECTIONS ARE MADE, G2 WILL MANUFACTURE OR PROVIDE PRODUCT BASED ON THE INFORMATION SHOWN ON THESE SHOP DRAWINGS